

***IIIG - Report Period: APR 2012  
Status Of Reported Tests***

<b>STATUS</b>	<b>COUNT</b>	<b>PERCENT</b>
Aborted	14	11.024
Cancelled	1	0.787
Invalid	2	1.575
Valid	110	86.614
Total Reported Tests	127	100.000

**IIIG - Report Period: APR 2012**  
**Itemized Lost Test Report**

Obs	Date	TESTKEY	REASON
1	20111007	ACC-8744	Test Was Terminated At Test Hour 94 Due To Loss Of Oil Temperature Control Caused By High Viscosity Increase.
2	20111014	ACC-8752	Test Was Terminated By Lab At Test Hour 73 Due To Loss Of Oil Temperature Control.
3	20111028	ACC-8859	Test Was Terminated At Test Hour 99 Due To Loss Of Oil Temperature Control.
4	20111031	ACC-8868	Test Terminated At Start Of Test Due To Internal Engine Coolant Leak.
5	20111110	ACC-8926	Test Declared Invalid Due To Oil Leak In Block At Dipstick Plug Hole Causing An Excessive Oil Leak Leading To Performance Not Representative Of The Oil.
6	20111118	ACC-8989	Test Terminated At Test Hour 88 Due To Excessive Blowby, Filter Plugging And Decreasing Oil Pressure Caused By A Blown Head Gasket.
7	20111121	ACC-8967	Test Terminated At Test Hour 91 Due To Blown Head Gasket.
8	20111122	ACC-9019	Test Erminated By Lab At Test Hour 86 Due To Loss Of Oil Temperature Control.
9	20111212	ACC-9096	Test Was Terminated At Test Hour 40 Due To A Blown Cylinder Head Gasket.
10	20111214	ACC-9158	Test Was Terminated At Test Hour 98 Per Sponsor's Request
11	20120207	ACC-9391	Test Terminated At Test Hour 95 Due To Blown Head Gasket
12	20120221	ACC-9454	Test Teminated During Break-In. Mechanical Failure, Connecting Rod Bearing Failed.
13	20120221	ACC-9449	Test Terminated At Test Hour 98 Due To Blown Head Gasket.
14	20120228	ACC-9471	Test Terminated At Test Hour 3 Due To Mechanical Failure (Burned Piston).
15	20120306	ACC-9514	Lab Declared Test Invalid Due To Loss Of Oil Caused By Front Seal Leak.
16	20120313	ACC-9556	Test Was Terminated At Test Hour 98. Oil Temperature Uncontrollable Due To Excessive Viscosity Increase.
17	20120329	ACC-9634	Test Terminated During Break-In Due To Scuffed Piston.

***IIIG - Report Period: APR 2012  
Replicate Database Report***

<b>Components of Replicate Database</b>	<b>APR 2012</b>	<b>All Periods</b>
Number of Tests	13	150
Formulations	6	68
Labs	5	6
Stands	10	21

**IIIG - Report Period: APR 2012**  
**by-Formulation Pooled s and Reproducibility of Replicate Data**

Report Period	Parameter	Degrees of Freedom	Pooled s	R
APR 2012	WPD	7	0.35226	0.98633
APR 2012	ACLW	7	0.38770	1.08555
APR 2012	PVIS	7	0.49446	1.38450
APR 2012	WPD (Without SA)	7	0.26931	0.75407
APR 2012	ACLW (Without SA)	7	0.39502	1.10607
APR 2012	PVIS (Without SA)	7	0.50308	1.40862
All	WPD	83	0.65526	1.83472
All	ACLW	83	0.55555	1.55554
All	PVIS	83	0.49808	1.39463
All	WPD (Without SA)	83	0.66434	1.86015
All	ACLW (Without SA)	83	0.58045	1.62527
All	PVIS (Without SA)	83	0.49552	1.38746

**IIIG - Report Period: APR 2012**  
**Pass/Fail**

<b>Report Period</b>	<b>API Category</b>	<b>N</b>	<b>Number Passed</b>	<b>% Passed</b>
APR 2012	All Categories, All Parameters	110	60	54.545
APR 2012	GF-4 - All Parameters	110	67	60.909
APR 2012	GF-4, ACLW	110	104	94.545
APR 2012	GF-4, ACLW (Without SA)	110	110	100.000
APR 2012	GF-4, PVIS	110	70	63.636
APR 2012	GF-4, PVIS (Without SA)	110	67	60.909
APR 2012	GF-4, STUCK_RINGS	110	109	99.091
APR 2012	GF-4, WPD	110	105	95.455
APR 2012	GF-4, WPD (Without SA)	110	90	81.818
APR 2012	GF-5 - All Parameters	110	60	54.545
APR 2012	GF-5, ACLW	110	104	94.545
APR 2012	GF-5, ACLW (Without SA)	110	110	100.000
APR 2012	GF-5, PVIS	110	70	63.636
APR 2012	GF-5, PVIS (Without SA)	110	67	60.909
APR 2012	GF-5, STUCK_RINGS	110	109	99.091
APR 2012	GF-5, WPD	110	88	80.000
APR 2012	GF-5, WPD (Without SA)	110	73	66.364
All	All Categories, All Parameters	3105	1194	38.454
All	GF-4 - All Parameters	3105	1602	51.594
All	GF-4, ACLW	3105	2952	95.072
All	GF-4, ACLW (Without SA)	3105	3005	96.779
All	GF-4, PVIS	3105	2048	65.958
All	GF-4, PVIS (Without SA)	3105	2099	67.601
All	GF-4, STUCK_RINGS	3105	3086	99.388
All	GF-4, WPD	3105	2348	75.620

**IIIG - Report Period: APR 2012**  
**Pass/Fail**

<b>Report Period</b>	<b>API Category</b>	<b>N</b>	<b>Number Passed</b>	<b>% Passed</b>
All	GF-4, WPD (Without SA)	3105	1964	63.253
All	GF-5 - All Parameters	3105	1194	38.454
All	GF-5, ACLW	3105	2952	95.072
All	GF-5, ACLW (Without SA)	3105	3005	96.779
All	GF-5, PVIS	3105	2048	65.958
All	GF-5, PVIS (Without SA)	3105	2099	67.601
All	GF-5, STUCK_RINGS	3105	3086	99.388
All	GF-5, WPD	3105	1705	54.911
All	GF-5, WPD (Without SA)	3105	1400	45.089

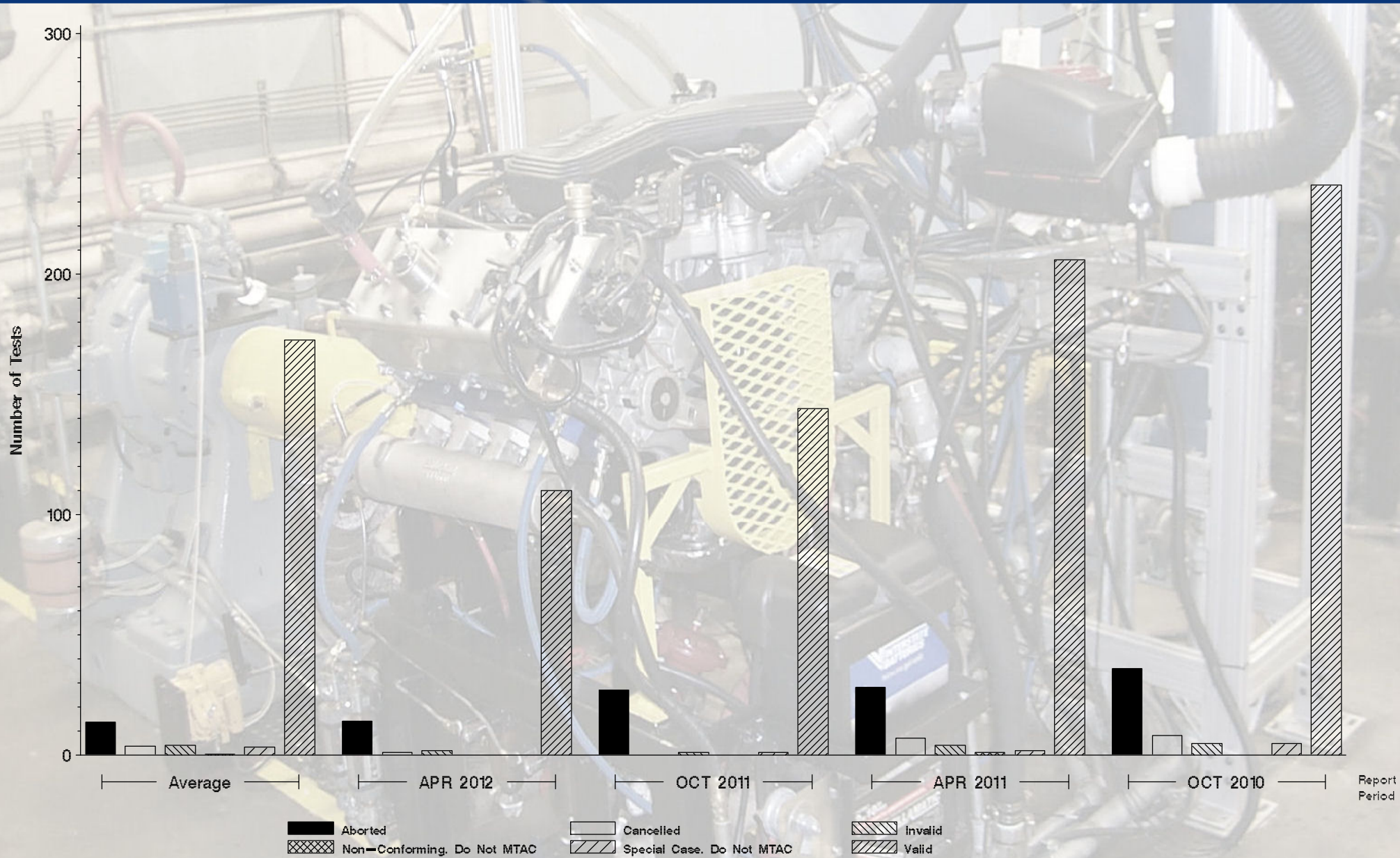


# Monitoring Agency

6555 Penn Avenue, Pittsburgh, PA 15206

<https://acc-ma.org>

IIIG  
Status of Reported Tests





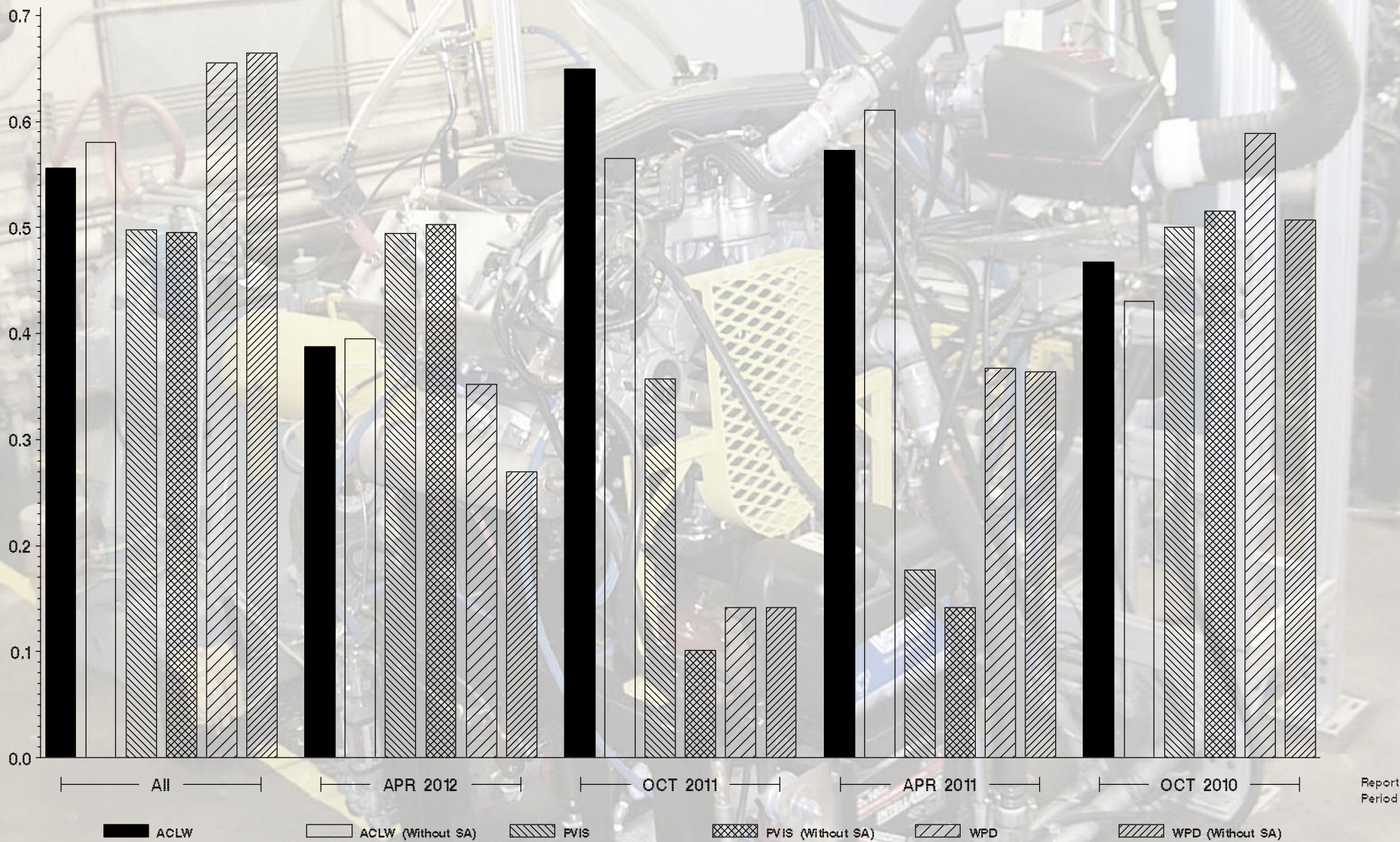
# Monitoring Agency

6555 Penn Avenue, Pittsburgh, PA 15206

<https://acc-ma.org>

IIIG

Candidate Precision as Represented by Pooled S







# Monitoring Agency

6555 Penn Avenue, Pittsburgh, PA 15206

<https://acc-ma.org>

IIIIG

Candidate Precision as Represented by Pooled S

