

IIIG - Report Period: APR 2010
Status Of Reported Tests

STATUS	COUNT	PERCENT
Aborted	12	4.580
Cancelled	1	0.382
Invalid	1	0.382
Non-Conforming. Do Not MTAC	1	0.382
Special Case. Do Not MTAC	12	4.580
Valid	235	89.695
Total Reported Tests	262	100.000

IIIG - Report Period: APR 2010
Itemized Lost Test Report

Obs	Date	TESTKEY	REASON
1	20091014	ACC-3255	Test Was Aborted At 88:24 Hours Due To A Blown Head Gasket.
2	20091022	ACC-3434	This Test Is Not Interpretable Due To Oil Consumption Greater Than 4.65.
3	20091026	ACC-3497	This Test Is Not Interpretable Due To Oil Consumption Greater Than 4.65.
4	20091029	ACC-3538	Test Terminated At 61 Hours Due To Excessive Oil Consumption.
5	20091029	ACC-3517	Terminated At 66 Hours Due To Loss Of Oil Pressure.
6	20091103	ACC-3550	This Test Was Terminated At 46 Hours Due To An Engine Fire.
7	20091106	ACC-3630	Oil Cooler Pump Was Malfunctioning Throughout Test. Maximum Flow To Oil Cooler Was Reduced 50%, And Caused Temperature Control Issues.
8	20091110	ACC-3621	Test Aborted During Timing Run Due To Mechanical Failure Of Intake Valve.
9	20091119	ACC-3698	Lab Did Not Adhere To Stand Selection Guidelines.
10	20091214	ACC-3960	Test Terminated At 26 Hours Due To Mechanical Failure.
11	20091230	ACC-4009	This Test Is Not Interpretable Due To Oil Consumption Greater Than 4.65
12	20100111	ACC-4197	Test Is Not Interpretable Due To Oil Consumption Greater Than 4.65.
13	20100112	ACC-4240	Test Declared Invalid Due To Left Head Gasket Failure At 81:55hrs.
14	20100114	ACC-4258	Test Aborted @ Test Hour 8 Due To Number 3 Rod Bearingg Failure.
15	20100122	ACC-4325	Aborted Test @ End Of Break In Due To #1 Rod Bearing Failure.
16	20100215	ACC-4499	Test Terminated At Client Request.
17	20100216	ACC-4508	Terminated Due To High Oil Consumption.
18	20100219	ACC-4557	Non-Interpretable Due To Oil Consumption Greater Than 4.65 Liters.
19	20100219	ACC-4576	Non Interpretable Due To Oil Consumption Greater Than 4.65 Liters.
20	20100224	ACC-4598	Test Not Interpretable Due To Oil Consumption Greater Than 4.65 Liters.
21	20100305	ACC-4538	Test Terminated At 98 Hours 32 Minutes Due To Loss Of Load & Oil Temperature Control.
22	20100315	ACC-4776	Non-Interpretable Due To Oil Consumption Greater Than 4.65 Liters.
23	20100317	ACC-4824	Not Interpretable Due To Oil Consumption Greater Than 4.65.
24	20100322	ACC-4857	This Test Is Not Interpretable Due To Oil Consumption Greater Than 4.6
25	20100326	ACC-4913	Test Declared Non-Interpretable Due To Excessive Oil Consumption

IIIG - Report Period: APR 2010
Itemized Lost Test Report

Obs	Date	TESTKEY	REASON
26	20100331	ACC-4958	Non-Interpretable Due To Oil Consumption Greater Than 4.65 Liters.
27	20100331	ACC-4970	Terminated At 98 Hours Due To Head Gasket Failure.

IIIG - Report Period: APR 2010
Replicate Database Report

Components of Replicate Database	APR 2010	All Periods
Number of Tests	6	112
Formulations	3	46
Labs	3	5
Stands	5	20

IIIG - Report Period: APR 2010
by-Formulation Pooled s and Reproducibility of Replicate Data

Report Period	Parameter	Degrees of Freedom	Pooled s	R
APR 2010	WPD	3	0.45242	1.26677
APR 2010	ACLW	3	0.77837	2.17944
APR 2010	PVIS	3	0.29315	0.82082
APR 2010	WPD (Without SA)	3	0.48971	1.37119
APR 2010	ACLW (Without SA)	3	0.88515	2.47843
APR 2010	PVIS (Without SA)	3	0.11294	0.31625
All	WPD	67	0.68405	1.91535
All	ACLW	67	0.55561	1.55570
All	PVIS	67	0.33838	0.94748
All	WPD (Without SA)	67	0.70251	1.96702
All	ACLW (Without SA)	67	0.59028	1.65277
All	PVIS (Without SA)	67	0.32997	0.92393

IIIG - Report Period: APR 2010
Pass/Fail

Report Period	API Category	N	Number Passed	% Passed
APR 2010	All Categories, All Parameters	235	113	48.0851
APR 2010	GF-4 - All Parameters	235	154	65.5319
APR 2010	GF-4, ACLW	235	229	97.4468
APR 2010	GF-4, ACLW (Without SA)	235	233	99.1489
APR 2010	GF-4, PVIS	235	184	78.2979
APR 2010	GF-4, PVIS (Without SA)	235	177	75.3191
APR 2010	GF-4, STUCK_RINGS	235	234	99.5745
APR 2010	GF-4, WPD	235	187	79.5745
APR 2010	GF-4, WPD (Without SA)	235	150	63.8298
APR 2010	GF-5 - All Parameters	235	113	48.0851
APR 2010	GF-5, ACLW	235	229	97.4468
APR 2010	GF-5, ACLW (Without SA)	235	233	99.1489
APR 2010	GF-5, PVIS	235	184	78.2979
APR 2010	GF-5, PVIS (Without SA)	235	177	75.3191
APR 2010	GF-5, STUCK_RINGS	235	234	99.5745
APR 2010	GF-5, WPD	235	132	56.1702
APR 2010	GF-5, WPD (Without SA)	235	91	38.7234
All	All Categories, All Parameters	2408	849	35.2575
All	GF-4 - All Parameters	2408	1167	48.4635
All	GF-4, ACLW	2408	2282	94.7674
All	GF-4, ACLW (Without SA)	2408	2310	95.9302
All	GF-4, PVIS	2408	1557	64.6595
All	GF-4, PVIS (Without SA)	2408	1631	67.7326
All	GF-4, STUCK_RINGS	2408	2396	99.5017
All	GF-4, WPD	2408	1744	72.4252

IIIG - Report Period: APR 2010
Pass/Fail

Report Period	API Category	N	Number Passed	% Passed
All	GF-4, WPD (Without SA)	2408	1461	60.6728
All	GF-5 - All Parameters	2408	849	35.2575
All	GF-5, ACLW	2408	2282	94.7674
All	GF-5, ACLW (Without SA)	2408	2310	95.9302
All	GF-5, PVIS	2408	1557	64.6595
All	GF-5, PVIS (Without SA)	2408	1631	67.7326
All	GF-5, STUCK_RINGS	2408	2396	99.5017
All	GF-5, WPD	2408	1243	51.6196
All	GF-5, WPD (Without SA)	2408	1037	43.0648



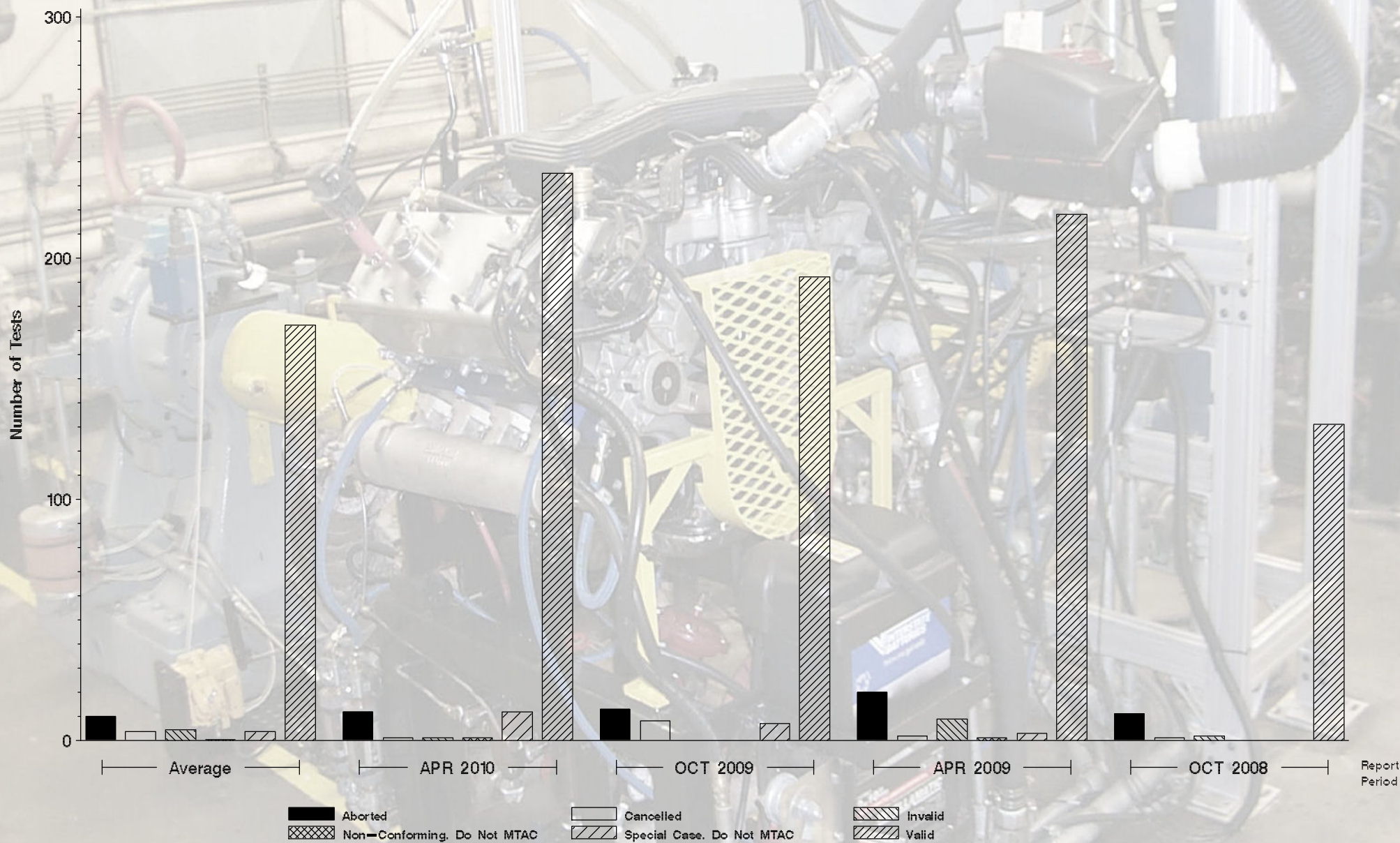
Monitoring Agency

6555 Penn Avenue, Pittsburgh, PA 15206

<https://acc-ma.org>

IIIG

Status of Reported Tests





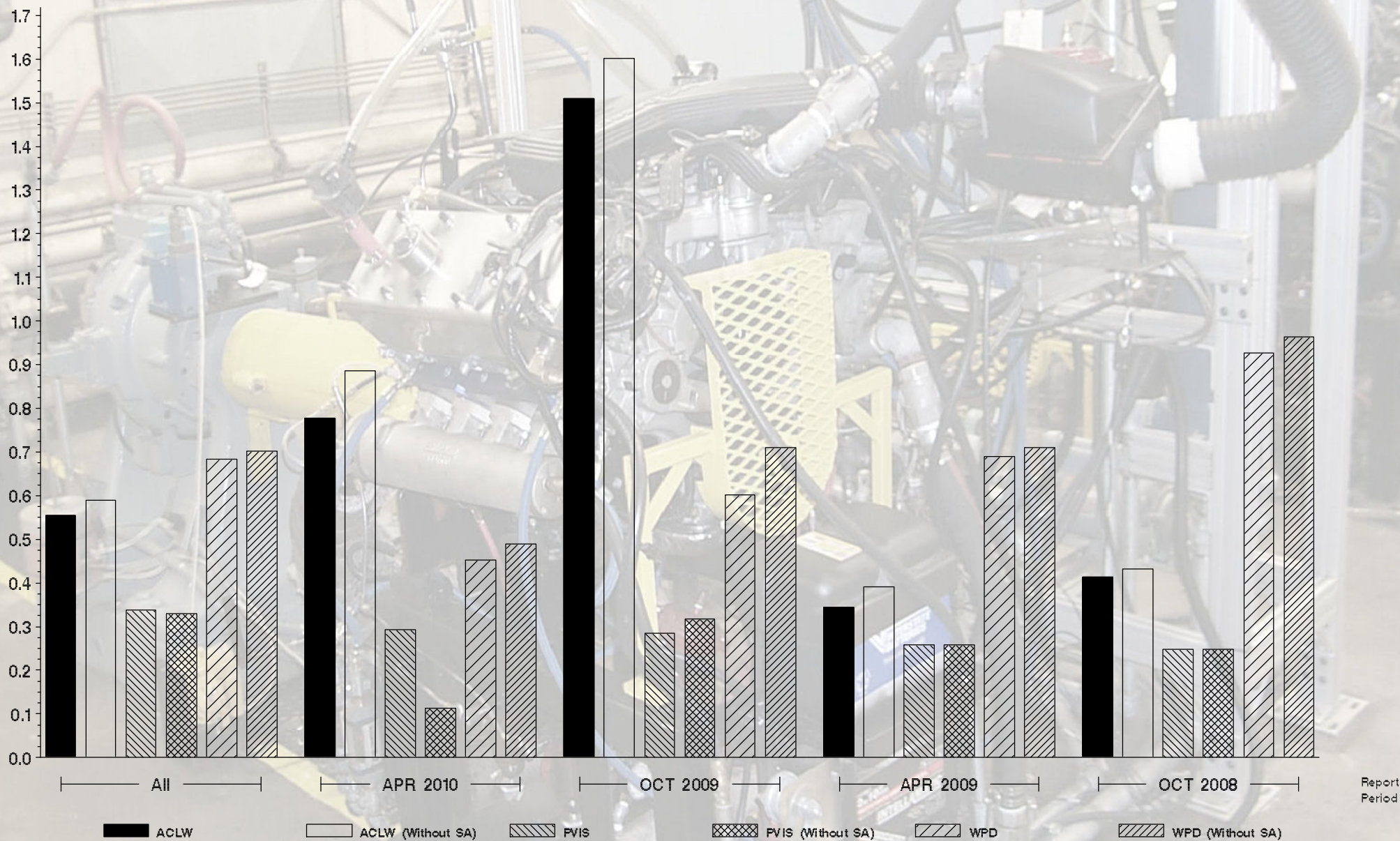
Monitoring Agency

6555 Penn Avenue, Pittsburgh, PA 15206

<https://acc-ma.org>

IIIG

Candidate Precision as Represented by Pooled S





Monitoring Agency

6555 Penn Avenue, Pittsburgh, PA 15206

<https://acc-ma.org>

IIIG

Candidate Precision as Represented by Pooled S

