

ACC Monitoring Agency

6555 Penn Avenue, Pittsburgh, PA 15206, USA

<https://acc-ma.org>

Services Provided By:

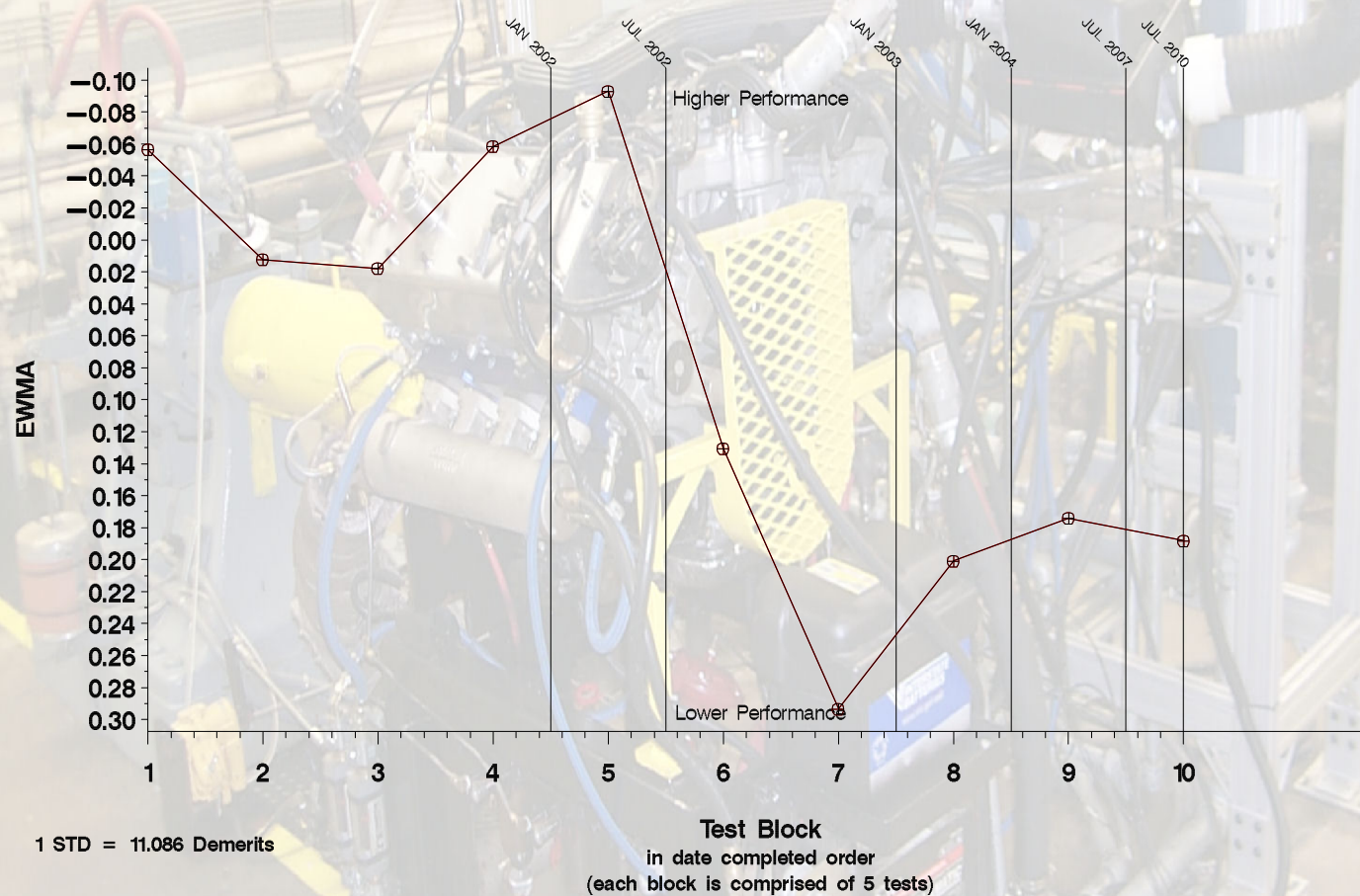


A Program of ASTM International

1R Operationally Valid Candidate Data

Parameter: TGC, Top Groove Carbon (units= Demerits)

Where validity is 'VI' or 'VQ' and SAE vis grade is 15W-40



ACC Monitoring Agency

6555 Penn Avenue, Pittsburgh, PA 15206, USA

<https://acc-ma.org>

Services Provided By:

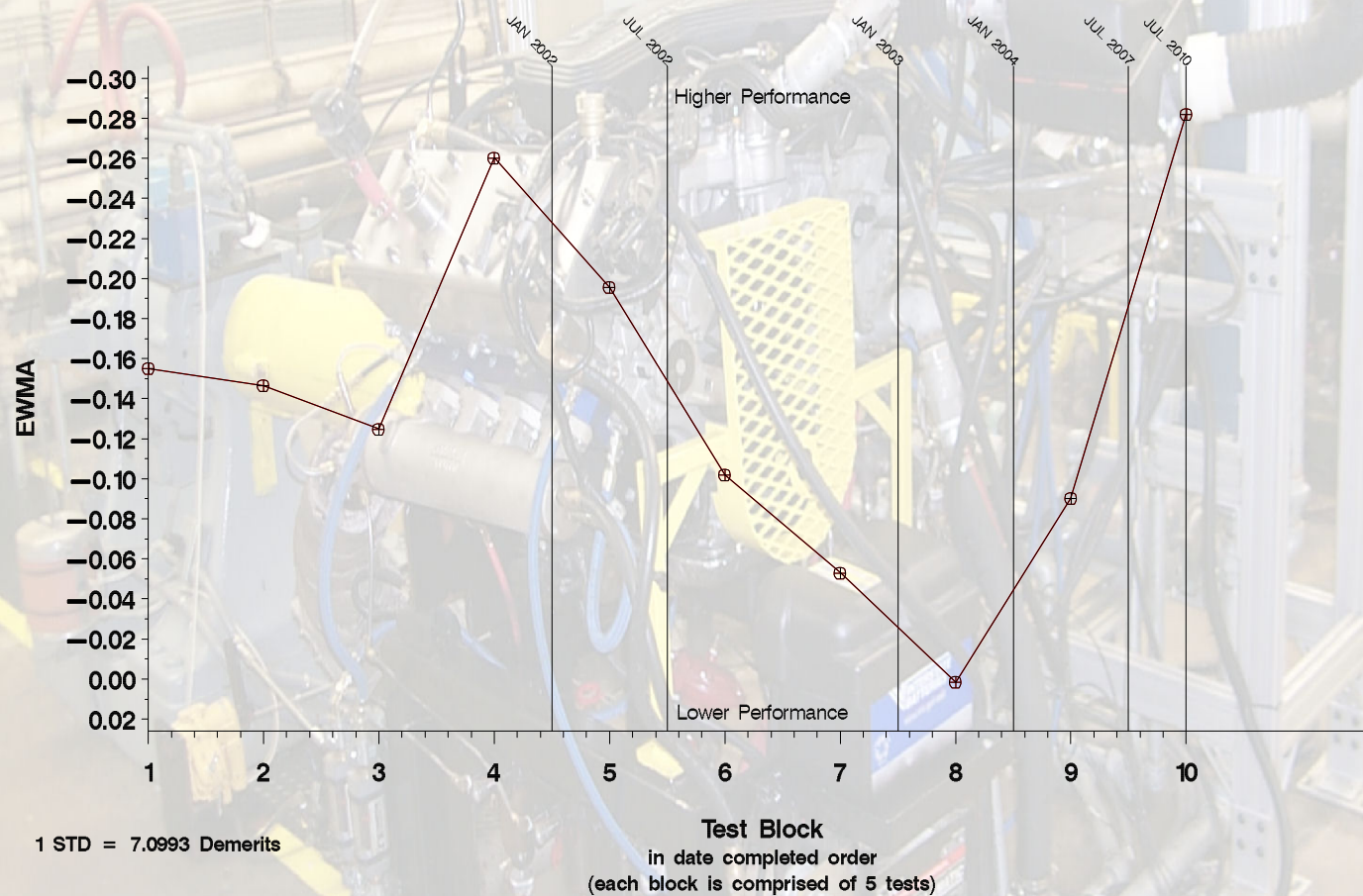


A Program of ASTM International

1R Operationally Valid Candidate Data

Parameter: TLC, Top Land Carbon (units= Demerits)

Where validity is 'VI' or 'VQ' and SAE vis grade is 15W-40



ACC Monitoring Agency

6555 Penn Avenue, Pittsburgh, PA 15206, USA

<https://acc-ma.org>

Services Provided By:

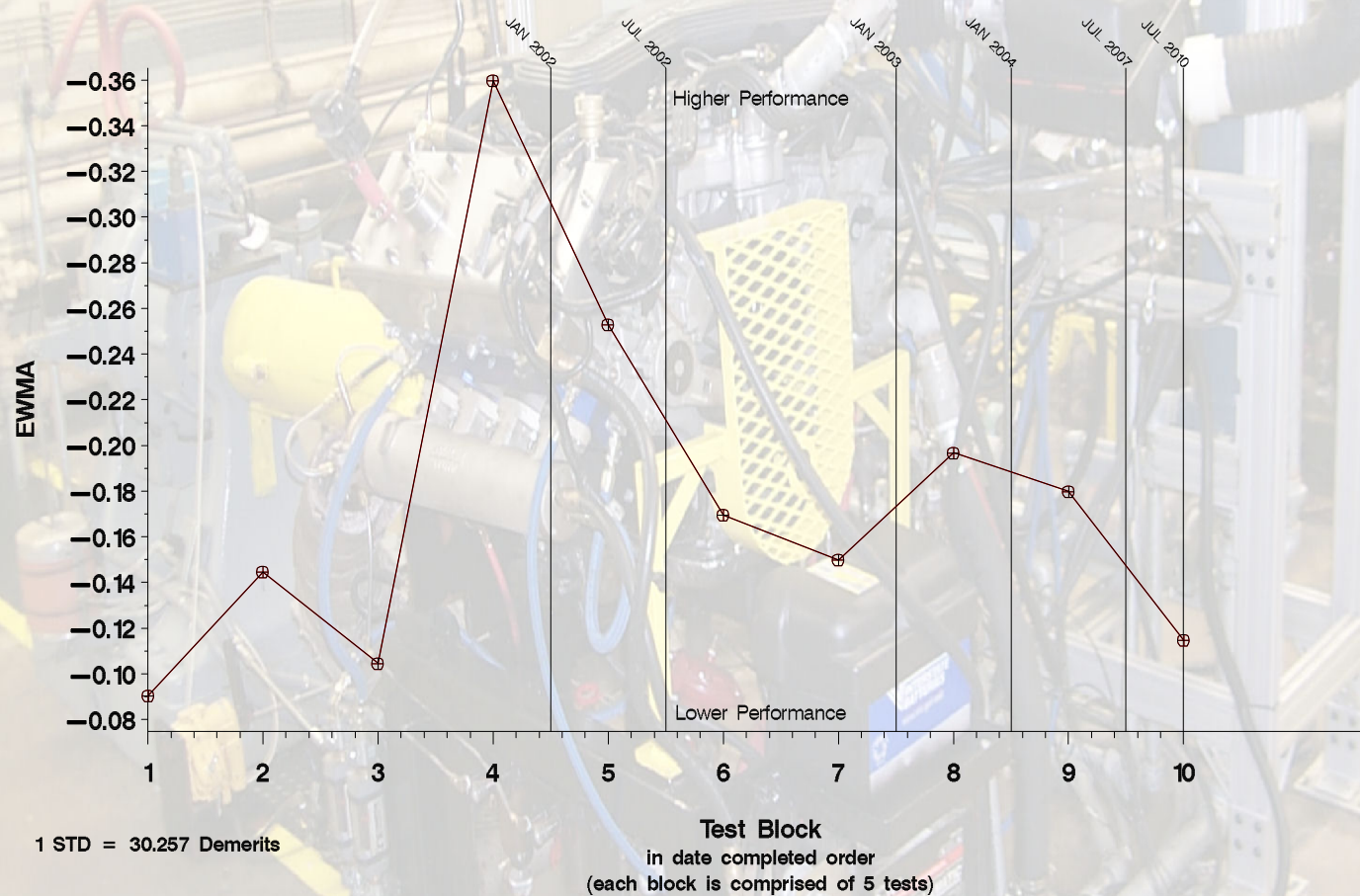


A Program of ASTM International

1R Operationally Valid Candidate Data

Parameter: WD, Weighted Demerits (units=Demerits)

Where validity is 'VI' or 'VQ' and SAE vis grade is 15W-40



ACC Monitoring Agency

6555 Penn Avenue, Pittsburgh, PA 15206, USA

<https://acc-ma.org>

Services Provided By:

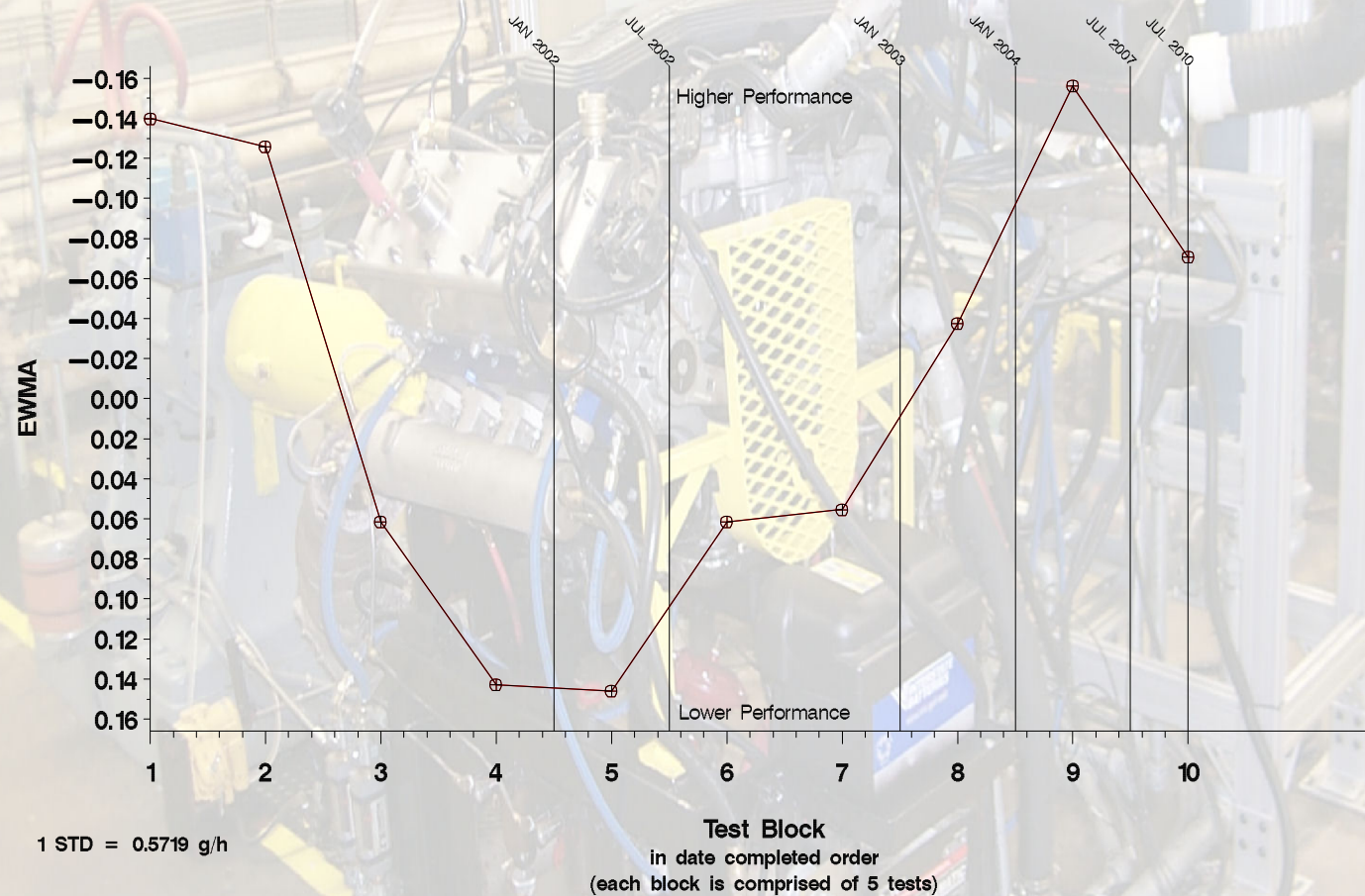


A Program of ASTM International

1R Operationally Valid Candidate Data

Parameter: BOTOC, Beginning-of-Test Oil Consumption (units= g/h)

Where validity is 'VI' or 'VQ' and SAE vis grade is 15W-40



⊕⊕⊕ with SA
⊕⊕⊕ without SA

ACC Monitoring Agency

6555 Penn Avenue, Pittsburgh, PA 15206, USA

<https://acc-ma.org>

Services Provided By:



A Program of ASTM International

1R Operationally Valid Candidate Data

Parameter: EOTOC, End-of-Test Oil Consumption (units= g/h)

Where validity is 'VI' or 'VQ' and SAE vis grade is 15W-40

