

***IIIF - Report Period: OCT 2016***  
***Status Of Reported Tests***

STATUS	COUNT	PERCENT
Aborted	11	20
Valid	44	80
Total Reported Tests	55	100

**IIIF - Report Period: OCT 2016**  
**Itemized Lost Test Report**

Obs	Date	TESTKEY	REASON
1	20160414	ACC-18248	Test Terminated At Test Hour 1 Due To A Pvc Malfunction Resulting In Loss Of Oil Charge.
2	20160426	ACC-18332	Test Terminated At Test Hour 69 Due To Loss Of Oil Temperature Control.
3	20160610	ACC-18566	Test Terminated At 70 Hours Due To Significant Oil Viscosity Increase.
4	20160617	ACC-18611	Test Terminated At 38 Hours Due To Exceeding The Maximum 24 Hour Downtime Requirement.
5	20160701	ACC-18701	Test Terminated At 76 Hours Due To Loss Of Oil Temperature Control Caused By Excessive Oil Viscosity Increase
6	20160722	ACC-18759	Test Terminated At 70 Hours Due To Significant Oil Viscosity Increase.
7	20160805	ACC-18809	Test Terminated At 70 Hours Due To Significant Oil Viscosity Increase.
8	20160817	ACC-18854	Test Terminated At 70 Hours Due To Significant Oil Viscosity Increase.
9	20160825	ACC-18893	Test Terminated At 70 Hours Due To Significant Oil Viscosity Increase.
10	20160830	ACC-18919	Test Terminated At 70 Hours Due To Significant Viscosity Increase.
11	20160921	ACC-19055	Test Terminated At 72 Hours Due To A Data Acquisition Problem.

***IIIF - Report Period: OCT 2016***  
***Replicate Database Report***

Components of Replicate Database	OCT 2016	All Periods
Number of Tests	.	114
Formulations	.	49
Labs	.	4
Stands	.	19

***IIIF - Report Period: OCT 2016***  
***by-Formulation Pooled s and Reproducibility of Replicate Data***

<b>Report Period</b>	<b>Parameter</b>	<b>Degrees of Freedom</b>	<b>Pooled s</b>	<b>R</b>
All	PVIS	65	0.02308	0.06461
All	WPD	65	0.64430	1.80405
All	APV	65	0.25868	0.72431
All	SACLW	65	3.37307	9.44458
All	PVIS (Without SA)	65	0.02322	0.06502
All	WPD (Without SA)	65	0.63329	1.77320
All	APV (Without SA)	65	0.25449	0.71256
All	SACLW (Without SA)	65	2.47468	6.92910

**IIIF - Report Period: OCT 2016**  
**Pass/Fail**

Report Period	API Category	N	Number Passed	% Passed
OCT 2016	All Categories, All Parameters	44	27	61.364
OCT 2016	SL - All Parameters	44	27	61.364
OCT 2016	SL, APV	44	43	97.727
OCT 2016	SL, APV (Without SA)	44	44	100.000
OCT 2016	SL, PVIS	44	33	75.000
OCT 2016	SL, PVIS (Without SA)	44	33	75.000
OCT 2016	SL, SACLW	44	44	100.000
OCT 2016	SL, SACLW (Without SA)	44	44	100.000
OCT 2016	SL, STUCK_RINGS	44	43	97.727
OCT 2016	SL, WPD	44	36	81.818
OCT 2016	SL, WPD (Without SA)	44	36	81.818
All	All Categories, All Parameters	2740	1413	51.569
All	SL - All Parameters	2740	1413	51.569
All	SL, APV	2740	2362	86.204
All	SL, APV (Without SA)	2740	2434	88.832
All	SL, PVIS	2740	1913	69.818
All	SL, PVIS (Without SA)	2740	1887	68.869
All	SL, SACLW	2740	2637	96.241
All	SL, SACLW (Without SA)	2740	2670	97.445
All	SL, STUCK_RINGS	2740	2663	97.190
All	SL, WPD	2740	2170	79.197
All	SL, WPD (Without SA)	2740	2148	78.394



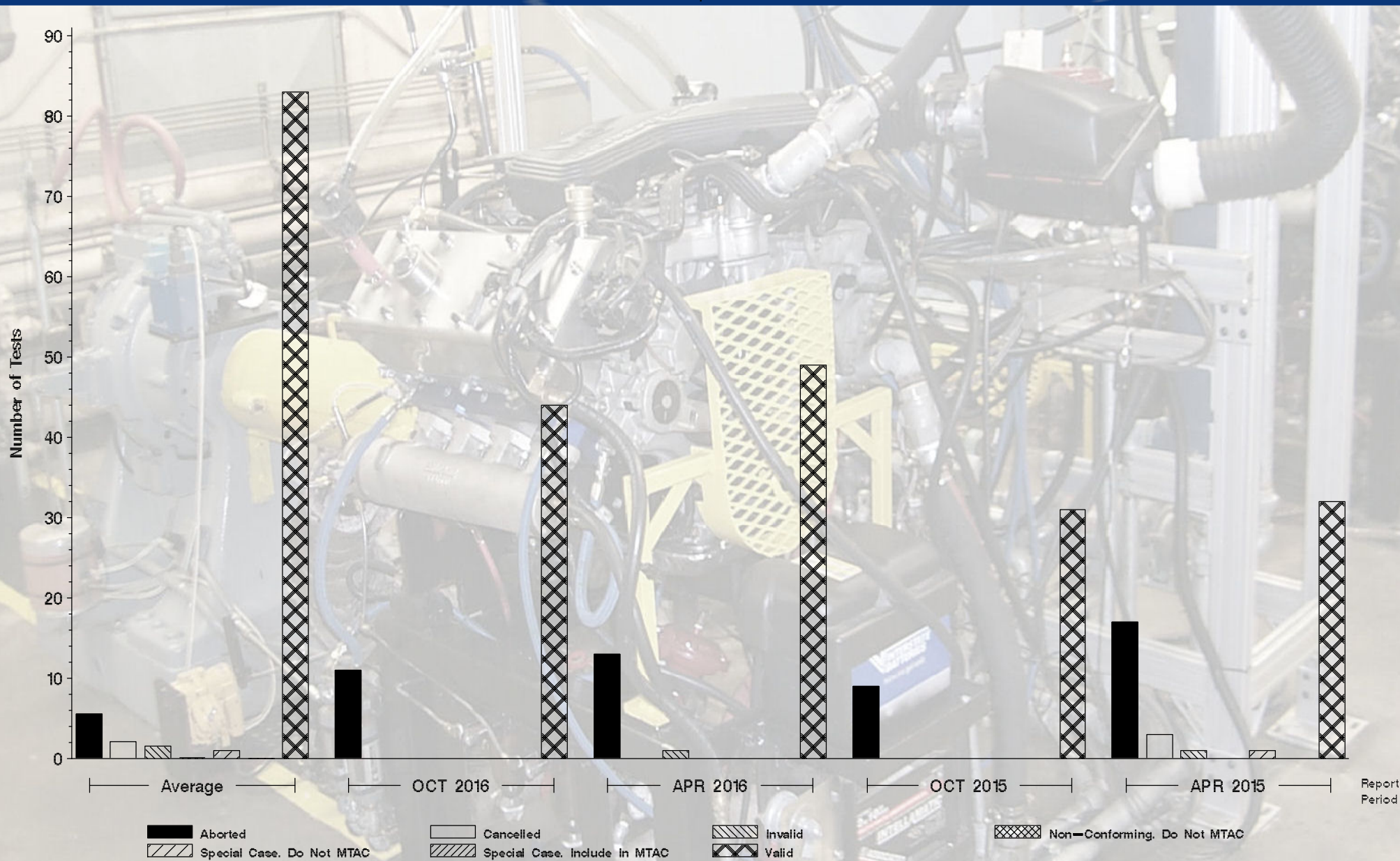
# Monitoring Agency

6555 Penn Avenue, Pittsburgh, PA 15206

<https://acc-ma.org>

IIIF

Status of Reported Tests







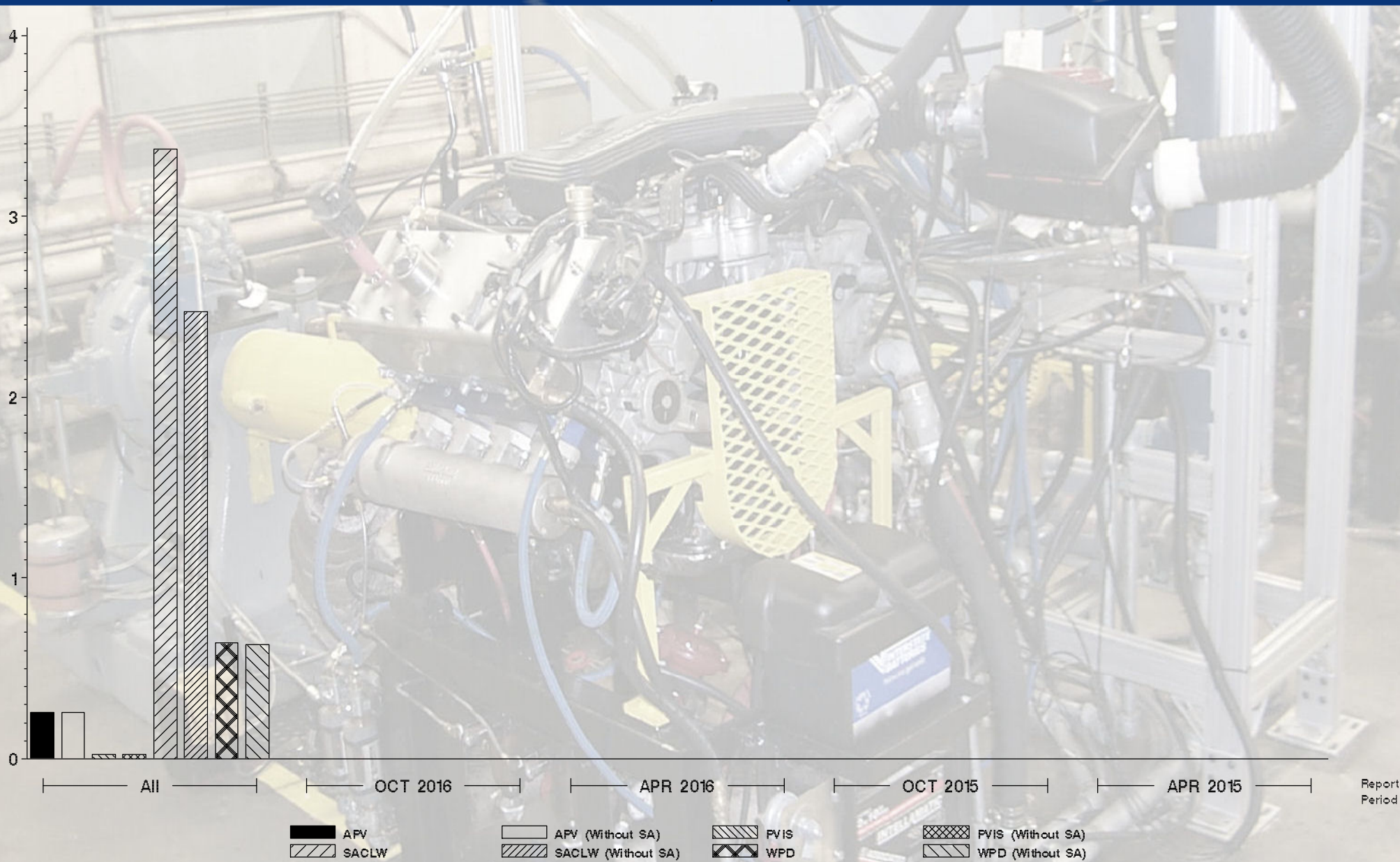
# Monitoring Agency

6555 Penn Avenue, Pittsburgh, PA 15206

<https://acc-ma.org>

III F

Candidate Precision as Represented by Pooled S





# Monitoring Agency

6555 Penn Avenue, Pittsburgh, PA 15206

<https://acc-ma.org>

III F

Candidate Precision as Represented by Pooled S

