

IIIF - Report Period: APR 2015
Status Of Reported Tests

STATUS	COUNT	PERCENT
Aborted	17	31.481
Cancelled	3	5.556
Invalid	1	1.852
Special Case. Do Not MTAC	1	1.852
Valid	32	59.259
Total Reported Tests	54	100.000

IIIF - Report Period: APR 2015
Itemized Lost Test Report

Obs	Date	TESTKEY	REASON
1	20141014	ACC-14775	Test Terminated At Test Hour 77 Due To Loss Of Oil Temperature Control.
2	20141016	ACC-14777	Test Terminated At Test Hour 78 Due To Loss Of Oil Temperature Control.
3	20141106	ACC-14945	Test Terminated At 0 Hours Due To Engine Mechanical Failure.
4	20141125	ACC-15052	Test Terminated At Test Hour 69 Due To Loss Of Oil Temperature Control.
5	20141203	ACC-15151	Test Terminated At Test Hour 75 Due To Loss Of Oil Temperature Control.
6	20141208	ACC-15203	Test Terminated At Test Hour 77 Due To Loss Of Oil Temperature Control.
7	20141212	ACC-15253	Test Terminated At Test Hour 54 Due To Loss Of Oil Temperature Control.
8	20141217	ACC-15296	Test Declared Non-Interpretable Due To Oil Consumption Greater Than 5.20 Liters.
9	20141218	ACC-15235	Test Terminated At Test Hour 76 Due To A Failed Front Oil Seal Causing Lost Oil Charge.
10	20141222	ACC-15244	Test Terminated At Test Hour 71 Due To Loss Of Oil Temperature Control.
11	20150105	ACC-15375	Test Terminated At Test Hour 59 Due To Loss Of Oil Temperature Control.
12	20150116	ACC-15415	Test Terminated At Test Hour 78 Due To Lossof Oil Temperature Control.
13	20150126	ACC-15445	Test Terminated At Test Hour 58 At Sponsor Request.
14	20150127	ACC-15457	Test Terminated At Test Hour 70 Due To Loss Of Oil Pressure.
15	20150130	ACC-15469	Test Terminated At Test Hour 74 At Sponsor Request
16	20150204	ACC-15490	Test Terminated At Test Hour 72 Due To Loss Of Oil Temperature Control.
17	20150211	ACC-15522	Test Terminated At Test Hour 60 Due To Engine Mechanical Failure.
18	20150313	ACC-15652	Test Declared Invalid Due To Oil Loss Caused By Leaking Rear Main Seal.
19	20150313	ACC-15647	Test Terminated At Test Hour 69 Due To Loss Of Oil Temperature Control.
20	20150316	ACC-15628	Test Terminated At Test Hour 65 Due To Loss Of Oil Temperature Control.
21	20150317	ACC-15659	Test Terminated At Test Hour 57 Due To Loss Of Oil Temperature Control.
22	20150323	ACC-15660	Test Was Terminated At Test Hour 79 Due To Loss Of Oil Temperature Control.

IIIF - Report Period: APR 2015
Replicate Database Report

Components of Replicate Database	APR 2015	All Periods
Number of Tests	1	114
Formulations	1	49
Labs	1	4
Stands	1	19

IIIF - Report Period: APR 2015
by-Formulation Pooled s and Reproducibility of Replicate Data

Report Period	Parameter	Degrees of Freedom	Pooled s	R
APR 2015	PVIS	0	0.00000	0.00000
APR 2015	WPD	0	0.00000	0.00000
APR 2015	APV	0	0.00000	0.00000
APR 2015	SACLW	0	0.00000	0.00000
APR 2015	PVIS (Without SA)	0	0.00000	0.00000
APR 2015	WPD (Without SA)	0	0.00000	0.00000
APR 2015	APV (Without SA)	0	0.00000	0.00000
APR 2015	SACLW (Without SA)	0	0.00000	0.00000
All	PVIS	65	0.02308	0.06461
All	WPD	65	0.64430	1.80405
All	APV	65	0.25868	0.72431
All	SACLW	65	3.37307	9.44458
All	PVIS (Without SA)	65	0.02322	0.06502
All	WPD (Without SA)	65	0.63329	1.77320
All	APV (Without SA)	65	0.25449	0.71256
All	SACLW (Without SA)	65	2.47468	6.92910

IIIF - Report Period: APR 2015
Pass/Fail

Report Period	API Category	N	Number Passed	% Passed
APR 2015	All Categories, All Parameters	32	20	62.500
APR 2015	SL - All Parameters	32	20	62.500
APR 2015	SL, APV	32	29	90.625
APR 2015	SL, APV (Without SA)	32	31	96.875
APR 2015	SL, PVIS	32	27	84.375
APR 2015	SL, PVIS (Without SA)	32	27	84.375
APR 2015	SL, SACLW	32	32	100.000
APR 2015	SL, SACLW (Without SA)	32	32	100.000
APR 2015	SL, STUCK_RINGS	32	29	90.625
APR 2015	SL, WPD	32	24	75.000
APR 2015	SL, WPD (Without SA)	32	24	75.000
All	All Categories, All Parameters	2616	1338	51.147
All	SL - All Parameters	2616	1338	51.147
All	SL, APV	2616	2248	85.933
All	SL, APV (Without SA)	2616	2310	88.303
All	SL, PVIS	2616	1818	69.495
All	SL, PVIS (Without SA)	2616	1792	68.502
All	SL, SACLW	2616	2519	96.292
All	SL, SACLW (Without SA)	2616	2552	97.554
All	SL, STUCK_RINGS	2616	2543	97.209
All	SL, WPD	2616	2064	78.899
All	SL, WPD (Without SA)	2616	2042	78.058



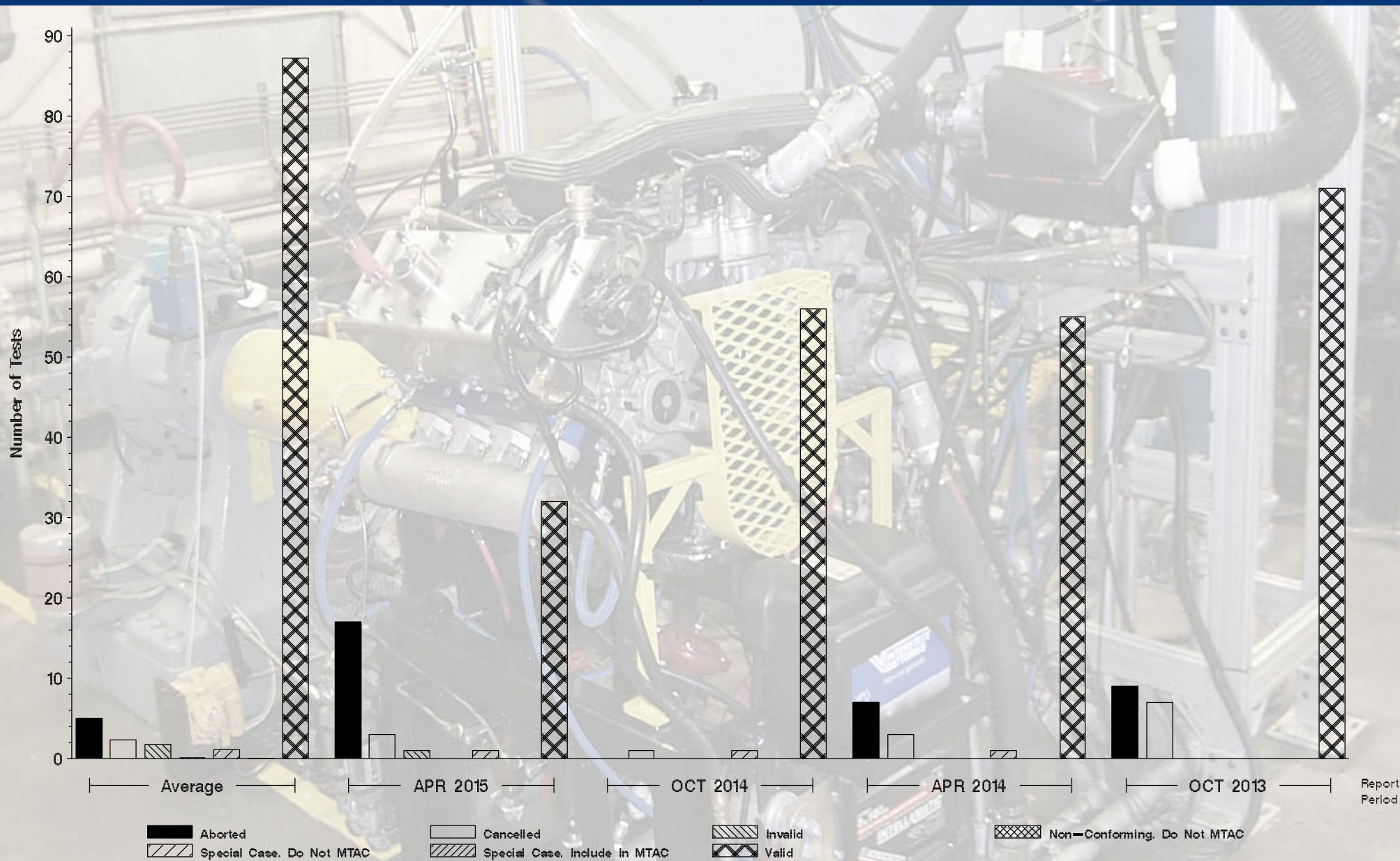
Monitoring Agency

6555 Penn Avenue, Pittsburgh, PA 15206

<https://acc-ma.org>

IIIF

Status of Reported Tests





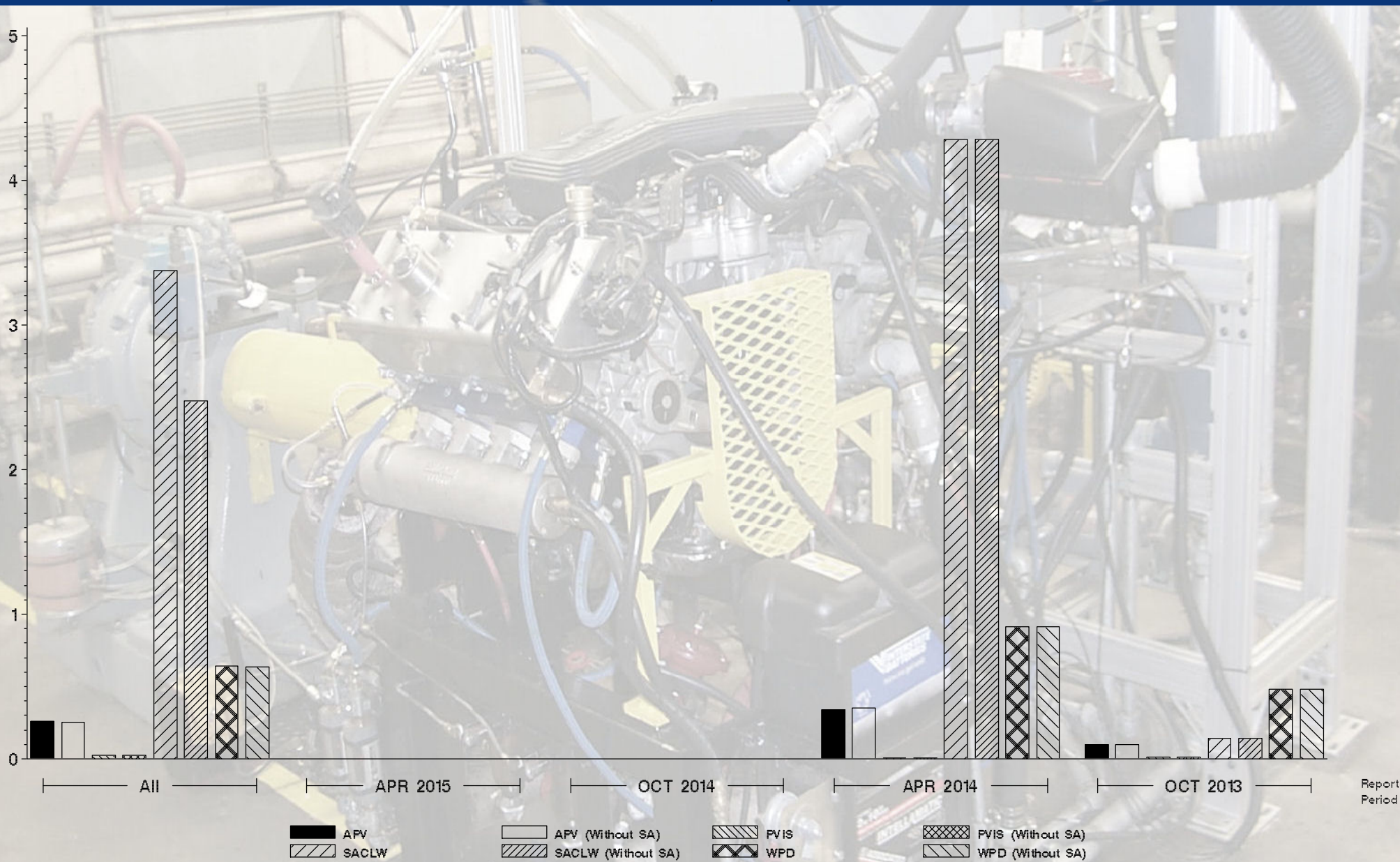
Monitoring Agency

6555 Penn Avenue, Pittsburgh, PA 15206

<https://acc-ma.org>

III F

Candidate Precision as Represented by Pooled S





Monitoring Agency

6555 Penn Avenue, Pittsburgh, PA 15206

<https://acc-ma.org>

IIIF

Candidate Precision as Represented by Pooled S

