

IIIF - Report Period: APR 2014
Status Of Reported Tests

STATUS	COUNT	PERCENT
Aborted	7	10.606
Cancelled	3	4.545
Special Case. Do Not MTAC	1	1.515
Valid	55	83.333
Total Reported Tests	66	100.000

IIIF - Report Period: APR 2014
Itemized Lost Test Report

Obs	Date	TESTKEY	REASON
1	20131211	ACC-13343	Non-Interpretable Due To Oil Consumption Greater Than 5.2 Liters.
2	20140102	ACC-13437	Test Terminated At Test Hour 77 Due To Loss Of Oil Temperature Control.
3	20140106	ACC-13390	Test Terminated At Test Hour 1 Due To Bent Connecting Rod.
4	20140110	ACC-13513	Test Terminated At Test Hour 77 Due To Significant Oil Viscosity Increase.
5	20140115	ACC-13521	Test Terminated At Test Hour 70 Due To Loss Of Oil Temperature Control.
6	20140204	ACC-13629	Terminated At Test Hour 79 Due To Loss Of Oil Temperature Control
7	20140210	ACC-13661	Test Terminated At Test Hour 79 At Sponsor Request.
8	20140211	ACC-13666	Test Terminated At Test Hour 78 Due To Significant Oil Viscosity Increase.
9	20140306	ACC-13794	Test Terminated At Test Hour 79 At Sponsor Request.
10	20140314	ACC-13836	Test Terminated At Test Hour 56 Due To Excessive Oil Consumption.
11	20140324	ACC-13882	Test Terminated At Test Hour 70 At Sponsor Request.

IIIF - Report Period: APR 2014
Replicate Database Report

Components of Replicate Database	APR 2014	All Periods
Number of Tests	4	112
Formulations	2	48
Labs	2	4
Stands	3	19

IIIF - Report Period: APR 2014
by-Formulation Pooled s and Reproducibility of Replicate Data

Report Period	Parameter	Degrees of Freedom	Pooled s	R
APR 2014	PVIS	2	0.00663	0.0186
APR 2014	WPD	2	0.91181	2.5531
APR 2014	APV	2	0.33838	0.9475
APR 2014	SACLW	2	4.28077	11.9862
APR 2014	PVIS (Without SA)	2	0.07558	0.2116
APR 2014	WPD (Without SA)	2	0.91181	2.5531
APR 2014	APV (Without SA)	2	0.35228	0.9864
APR 2014	SACLW (Without SA)	2	4.28077	11.9862
All	PVIS	64	0.02100	0.0588
All	WPD	64	0.64669	1.8107
All	APV	64	0.26062	0.7297
All	SACLW	64	3.39903	9.5173
All	PVIS (Without SA)	64	1.06209	2.9739
All	WPD (Without SA)	64	0.63554	1.7795
All	APV (Without SA)	64	0.25644	0.7180
All	SACLW (Without SA)	64	2.49354	6.9819

IIIF - Report Period: APR 2014
Pass/Fail

Report Period	API Category	N	Number Passed	% Passed
APR 2014	All Categories, All Parameters	55	35	63.636
APR 2014	SL - All Parameters	55	35	63.636
APR 2014	SL, APV	55	50	90.909
APR 2014	SL, APV (Without SA)	55	55	100.000
APR 2014	SL, PVIS	55	46	83.636
APR 2014	SL, PVIS (Without SA)	55	46	83.636
APR 2014	SL, SACLW	55	54	98.182
APR 2014	SL, SACLW (Without SA)	55	54	98.182
APR 2014	SL, STUCK_RINGS	55	51	92.727
APR 2014	SL, WPD	55	41	74.545
APR 2014	SL, WPD (Without SA)	55	41	74.545
All	All Categories, All Parameters	2528	1287	50.910
All	SL - All Parameters	2528	1287	50.910
All	SL, APV	2528	2167	85.720
All	SL, APV (Without SA)	2528	2224	87.975
All	SL, PVIS	2528	1746	69.066
All	SL, PVIS (Without SA)	2528	1746	69.066
All	SL, SACLW	2528	2433	96.242
All	SL, SACLW (Without SA)	2528	2466	97.547
All	SL, STUCK_RINGS	2528	2468	97.627
All	SL, WPD	2528	1995	78.916
All	SL, WPD (Without SA)	2528	1973	78.046



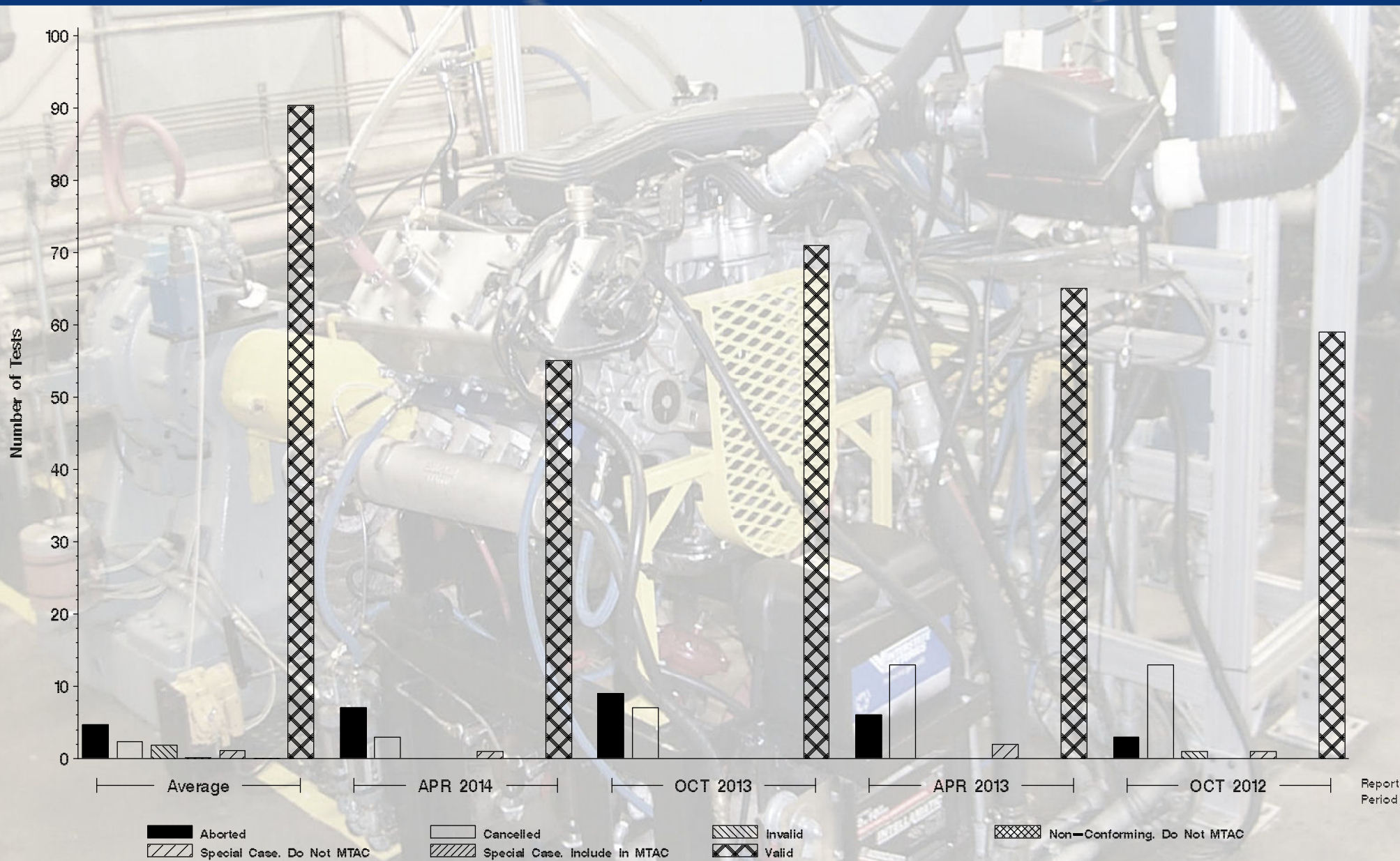
Monitoring Agency

6555 Penn Avenue, Pittsburgh, PA 15206

<https://acc-ma.org>

IIIF

Status of Reported Tests





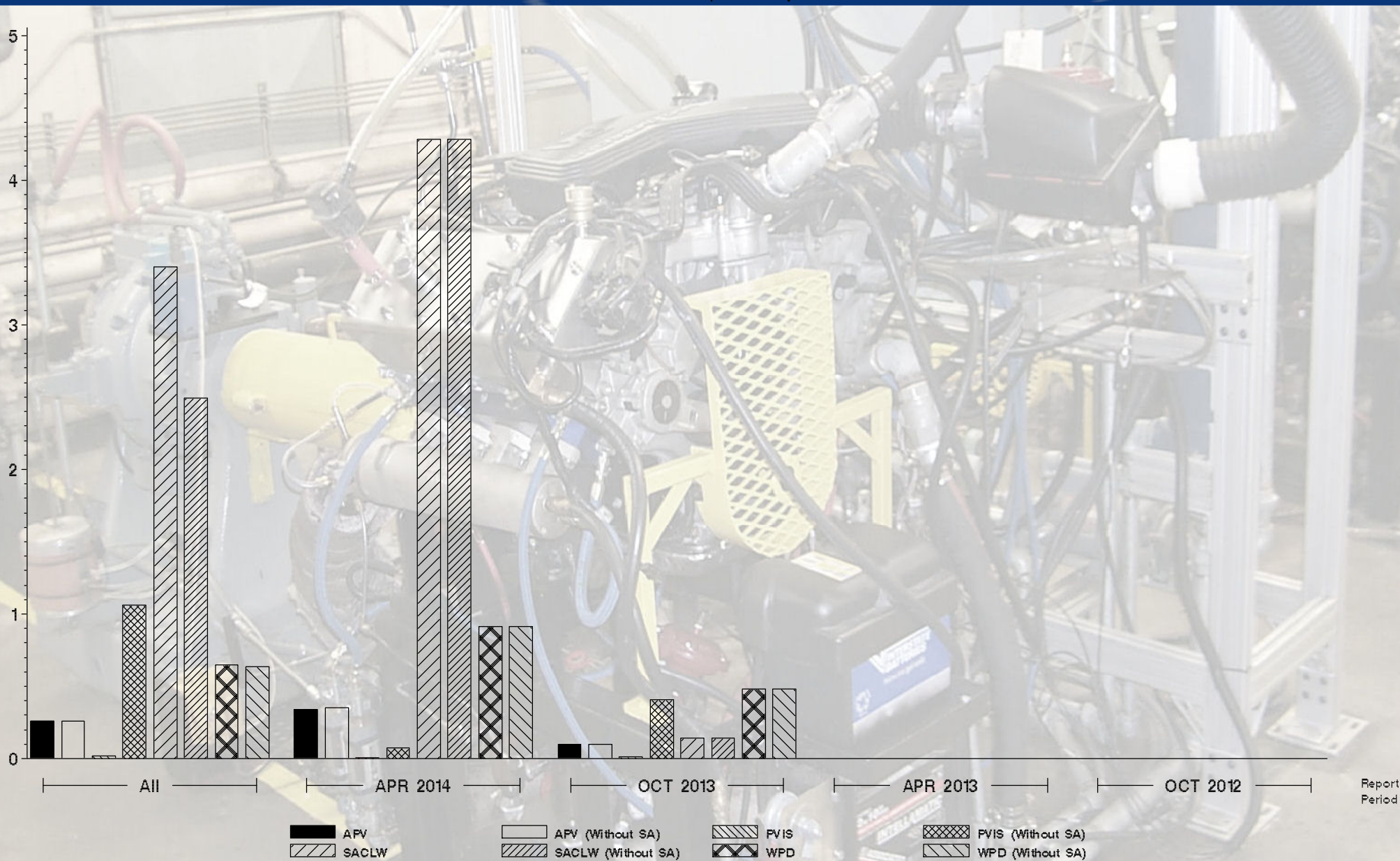
Monitoring Agency

6555 Penn Avenue, Pittsburgh, PA 15206

<https://acc-ma.org>

IIIF

Candidate Precision as Represented by Pooled S





Monitoring Agency

6555 Penn Avenue, Pittsburgh, PA 15206

<https://acc-ma.org>

III F

Candidate Precision as Represented by Pooled S

