

***IIIF - Report Period: APR 2012***  
***Status Of Reported Tests***

STATUS	COUNT	PERCENT
Aborted	9	16.667
Cancelled	2	3.704
Valid	43	79.630
Total Reported Tests	54	100.000

**IIIF - Report Period: APR 2012**  
**Itemized Lost Test Report**

Obs	Date	TESTKEY	REASON
1	20111003	ACC-8656	Test Was Terminated By The Lab At Test Hour 77 Due To Loss Of Oil Temperature Control
2	20111005	ACC-8733	Test Terminated At Test Hour 79 Per Sponsor's Request.
3	20111014	ACC-8761	Test Was Terminated By Lab At Test Hour 75 Due To Loss Of Oil Temperature Control.
4	20111019	ACC-8772	Test Was Terminated By Lab At Test Hour 68 Due To Loss Of Oil Temperature Control.
5	20111031	ACC-8840	Test Was Terminated At Test Hour 70 Due To High Blowby.
6	20111104	ACC-8909	Test Was Terminated At Test Hour 75 Per Sponsor's Request.
7	20111104	ACC-8842	Terminated By Lab Due To Loss Of Oil Temperature Control.
8	20111115	ACC-8957	Test Was Terminated At Test Hour 65 Due To High Blowby.
9	20111117	ACC-8973	Terminated By Lab At Test Hour 79 Due To Loss Of Oil Temperature Control.
10	20111117	ACC-8975	Terminated By Lab At Test Hour 79 Due To Loss Of Oil Temperature
11	20111209	ACC-9111	Test Was Terminated During Initial Warm-Up Due To Collapsed #4 Piston.

***IIIF - Report Period: APR 2012***  
***Replicate Database Report***

Components of Replicate Database	APR 2012	All Periods
Number of Tests	.	106
Formulations	.	45
Labs	.	4
Stands	.	19

***IIIF - Report Period: APR 2012***  
***by-Formulation Pooled s and Reproducibility of Replicate Data***

Report Period	Parameter	Degrees of Freedom	Pooled s	R
All	PVIS	61	0.02143	0.06000
All	WPD	61	0.63854	1.78790
All	APV	61	0.25952	0.72666
All	SACLW	61	3.39418	9.50370
All	PVIS (Without SA)	61	1.08655	3.04235
All	WPD (Without SA)	61	0.62668	1.75471
All	APV (Without SA)	61	0.25449	0.71259
All	SACLW (Without SA)	61	2.43360	6.81408

**IIIF - Report Period: APR 2012**  
**Pass/Fail**

Report Period	API Category	N	Number Passed	% Passed
APR 2012	All Categories, All Parameters	43	23	53.488
APR 2012	SL - All Parameters	43	23	53.488
APR 2012	SL, APV	43	41	95.349
APR 2012	SL, APV (Without SA)	43	43	100.000
APR 2012	SL, PVIS	43	25	58.140
APR 2012	SL, PVIS (Without SA)	43	25	58.140
APR 2012	SL, SACLW	43	43	100.000
APR 2012	SL, SACLW (Without SA)	43	43	100.000
APR 2012	SL, STUCK_RINGS	43	42	97.674
APR 2012	SL, WPD	43	40	93.023
APR 2012	SL, WPD (Without SA)	43	39	90.698
All	All Categories, All Parameters	2278	1163	51.054
All	SL - All Parameters	2278	1163	51.054
All	SL, APV	2278	1949	85.558
All	SL, APV (Without SA)	2278	1982	87.006
All	SL, PVIS	2278	1586	69.622
All	SL, PVIS (Without SA)	2278	1560	68.481
All	SL, SACLW	2278	2186	95.961
All	SL, SACLW (Without SA)	2278	2219	97.410
All	SL, STUCK_RINGS	2278	2242	98.420
All	SL, WPD	2278	1805	79.236
All	SL, WPD (Without SA)	2278	1779	78.095



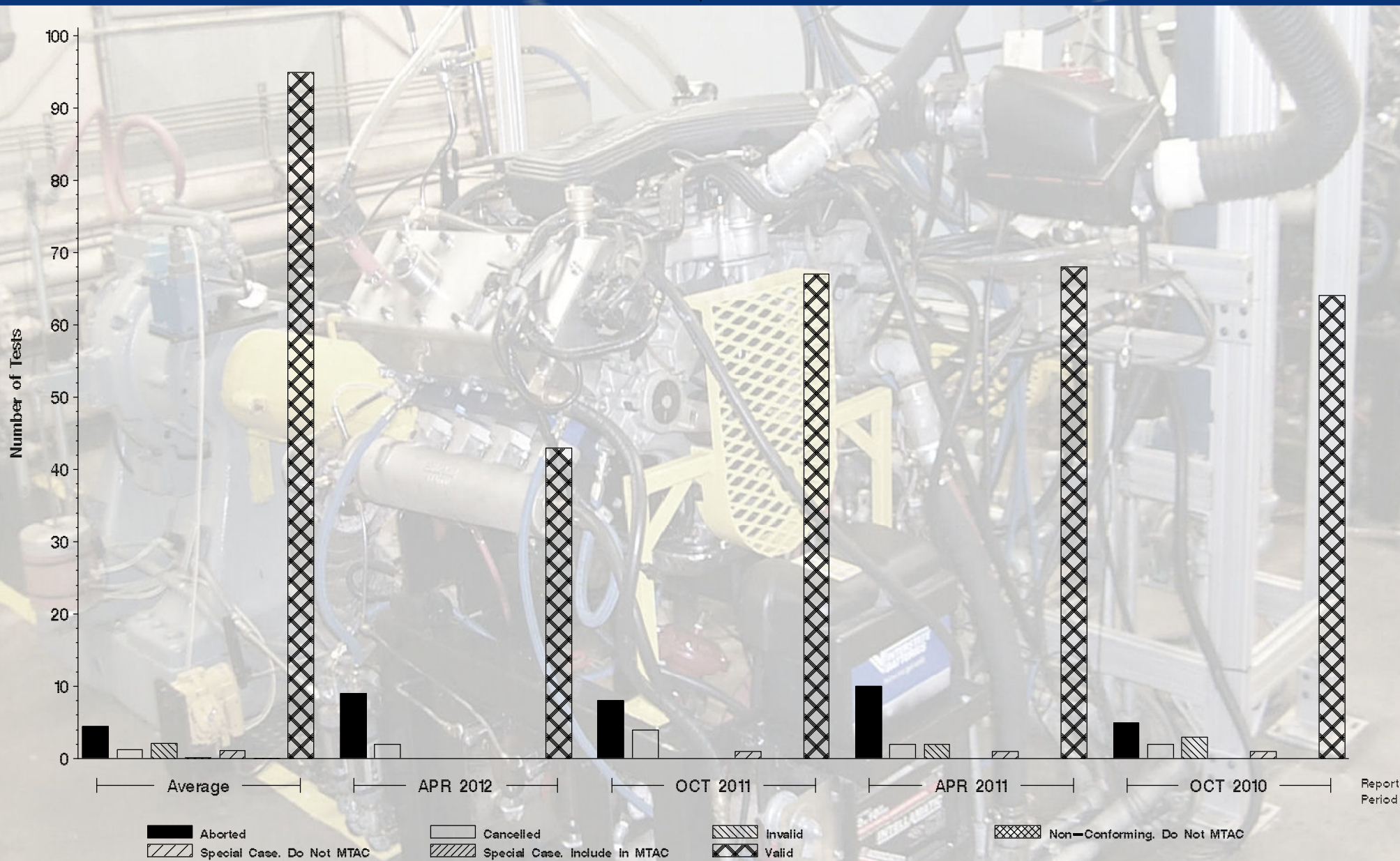
# Monitoring Agency

6555 Penn Avenue, Pittsburgh, PA 15206

<https://acc-ma.org>

IIIF

Status of Reported Tests







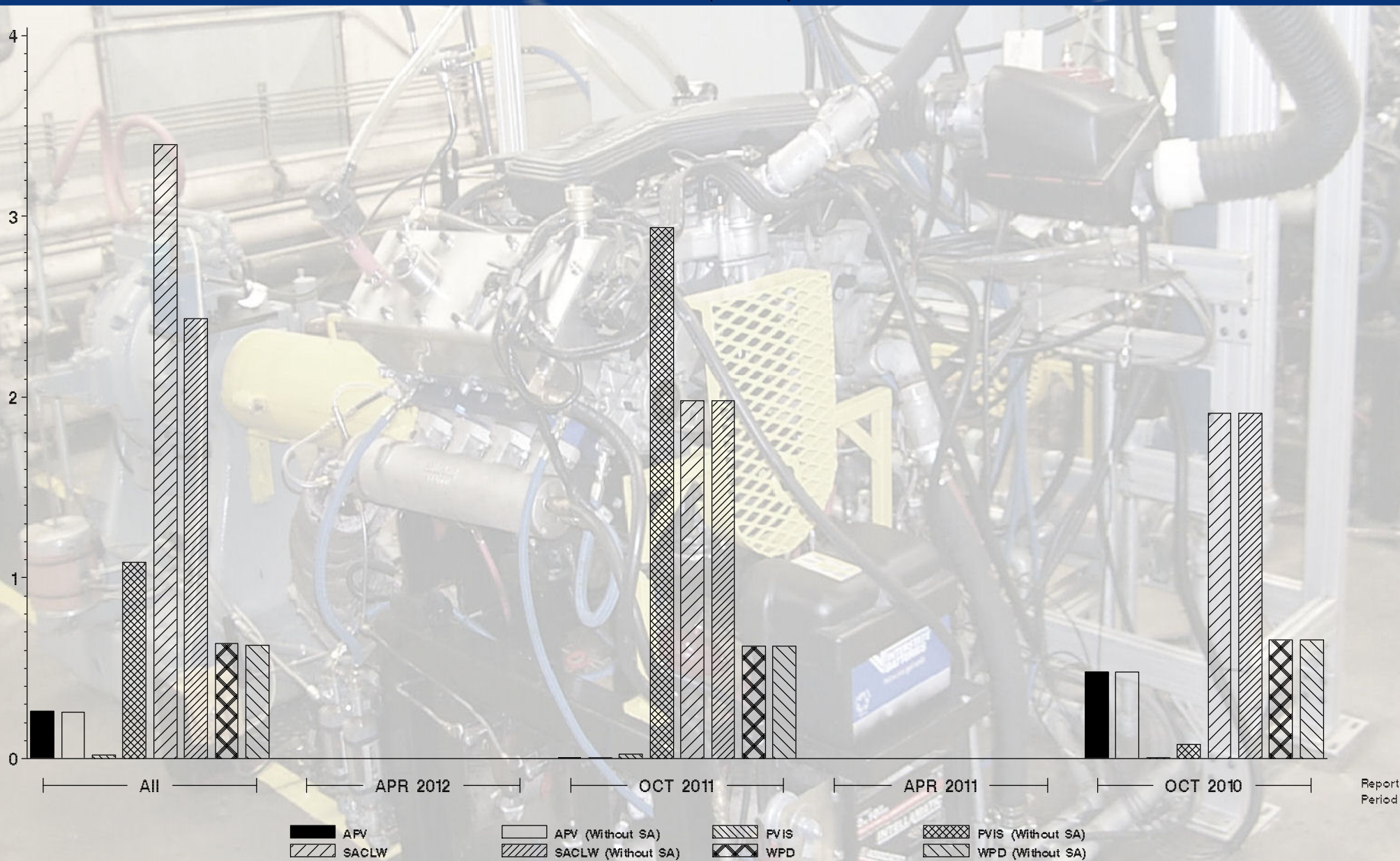
# Monitoring Agency

6555 Penn Avenue, Pittsburgh, PA 15206

<https://acc-ma.org>

III F

Candidate Precision as Represented by Pooled S







# Monitoring Agency

6555 Penn Avenue, Pittsburgh, PA 15206

<https://acc-ma.org>

III F

Candidate Precision as Represented by Pooled S

