

IIIF - Report Period: APR 2010
Status Of Reported Tests

STATUS	COUNT	PERCENT
Aborted	8	7.692
Cancelled	5	4.808
Invalid	1	0.962
Special Case. Do Not MTAC	2	1.923
Valid	88	84.615
Total Reported Tests	104	100.000

IIIF - Report Period: APR 2010
Itemized Lost Test Report

Obs	Date	TESTKEY	REASON
1	20091009	ACC-3228	Non-Interpretable Due To Oil Consumption Greater Than 6.5 Liters.
2	20091016	ACC-3335	Test Terminated At 75 Hours Per Customer Request.
3	20091020	ACC-3347	Test Was Terminated At 70 Hours Due To Significant Oil Viscosity Increase.
4	20091021	ACC-3402	Test Terminated 52 Minutes Into Test Due To The Crankshaft Nose Sheared Off.
5	20091022	ACC-3440	Test Was Terminated At 75 Hours Per Customer Request.
6	20091028	ACC-3442	This Test Is Not Interpretable Due To Oil Consumption Greater Than 5.2
7	20091030	ACC-3448	Test Terminated At 70 Hours At Sponsor Request.
8	20091201	ACC-3790	Test Was Terminated At 78 Hours Due To Loss Of Oil Temperature Control.
9	20091202	ACC-3703	Test Was Terminated At 70 Hours Due To Significant Oil Viscosity Increase.
10	20091207	ACC-3891	Test Was Terminated Early Due To Excessive Oil Thickening And Loss Of Temperature Control.
11	20091215	ACC-3995	Test Terminated Early Per Customer Request.
12	20100126	ACC-4343	Test Invalid, Due To Loss Of Oil At 30hr Oil Level.
13	20100127	ACC-4358	Test Was Terminated At 74 Hours Due To Significant Viscosity Increase.
14	20100129	ACC-4373	Test Terminated At 70 Hours Per Customer Request.
15	20100223	ACC-4596	Test Terminated At 20 Hours Due To High Oil Consumption.
16	20100226	ACC-4662	Test Was Terminated At 59 Hours. Negative Qi Due To Emergency Shutdown.

IIIF - Report Period: APR 2010
Replicate Database Report

Components of Replicate Database	APR 2010	All Periods
Number of Tests	.	102
Formulations	.	43
Labs	.	4
Stands	.	19

IIIF - Report Period: APR 2010
by-Formulation Pooled s and Reproducibility of Replicate Data

Report Period	Parameter	Degrees of Freedom	Pooled s	R
All	PVIS	59	0.02151	0.06023
All	WPD	59	0.63848	1.78775
All	APV	59	0.25635	0.71777
All	SACLW	59	3.43260	9.61128
All	PVIS (Without SA)	59	1.03640	2.90193
All	WPD (Without SA)	59	0.62622	1.75342
All	APV (Without SA)	59	0.25109	0.70304
All	SACLW (Without SA)	59	2.44846	6.85568

IIIF - Report Period: APR 2010
Pass/Fail

Report Period	API Category	N	Number Passed	% Passed
APR 2010	All Categories, All Parameters	88	51	57.955
APR 2010	SL - All Parameters	88	51	57.955
APR 2010	SL, APV	88	81	92.045
APR 2010	SL, APV (Without SA)	88	87	98.864
APR 2010	SL, PVIS	88	56	63.636
APR 2010	SL, PVIS (Without SA)	88	54	61.364
APR 2010	SL, SACLW	88	88	100.000
APR 2010	SL, SACLW (Without SA)	88	88	100.000
APR 2010	SL, STUCK_RINGS	88	82	93.182
APR 2010	SL, WPD	88	82	93.182
APR 2010	SL, WPD (Without SA)	88	78	88.636
All	All Categories, All Parameters	2036	1042	51.179
All	SL - All Parameters	2036	1042	51.179
All	SL, APV	2036	1724	84.676
All	SL, APV (Without SA)	2036	1742	85.560
All	SL, PVIS	2036	1447	71.071
All	SL, PVIS (Without SA)	2036	1436	70.530
All	SL, SACLW	2036	1945	95.530
All	SL, SACLW (Without SA)	2036	1978	97.151
All	SL, STUCK_RINGS	2036	2019	99.165
All	SL, WPD	2036	1592	78.193
All	SL, WPD (Without SA)	2036	1571	77.161



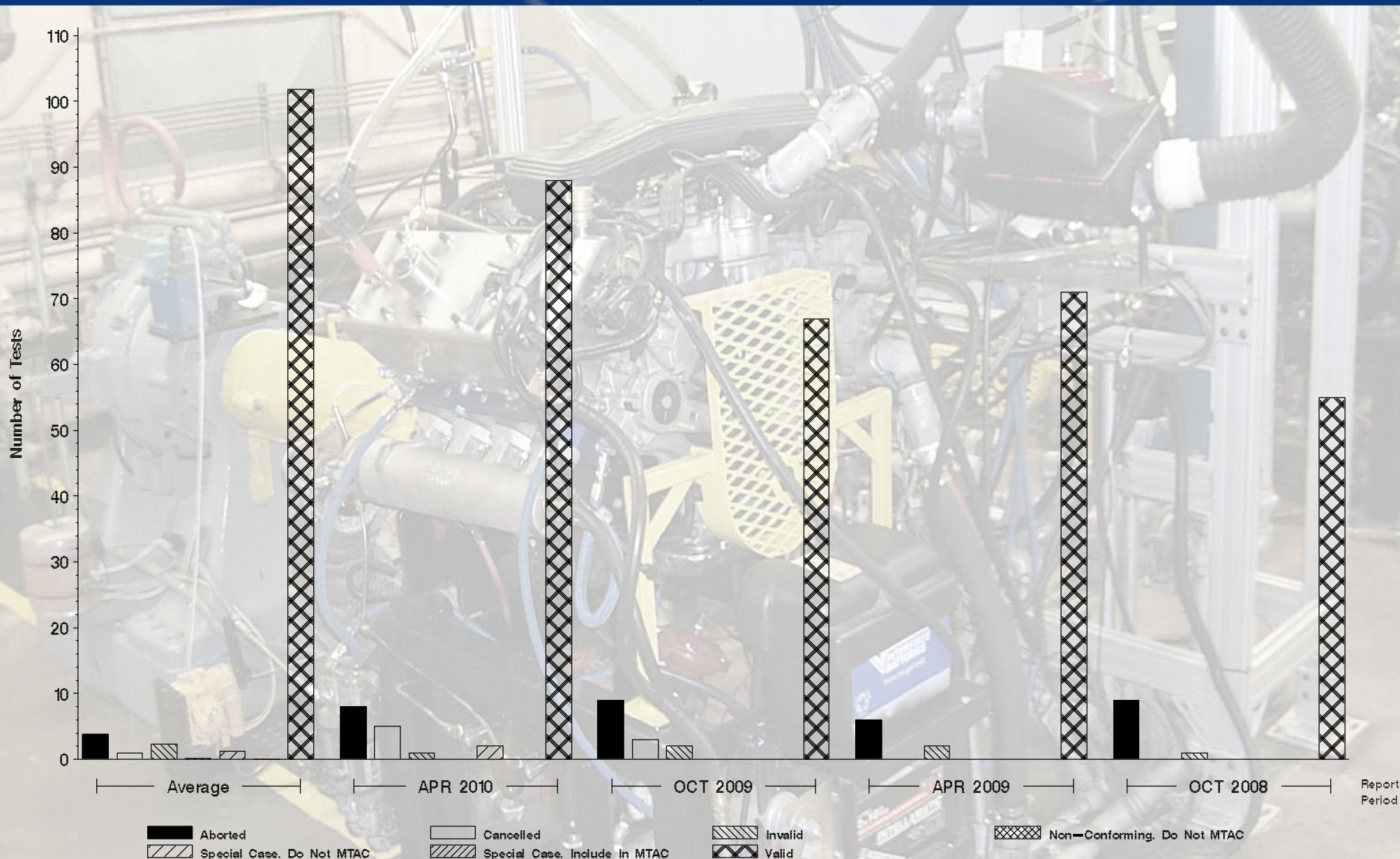
Monitoring Agency

6555 Penn Avenue, Pittsburgh, PA 15206

<https://acc-ma.org>

IIIF

Status of Reported Tests





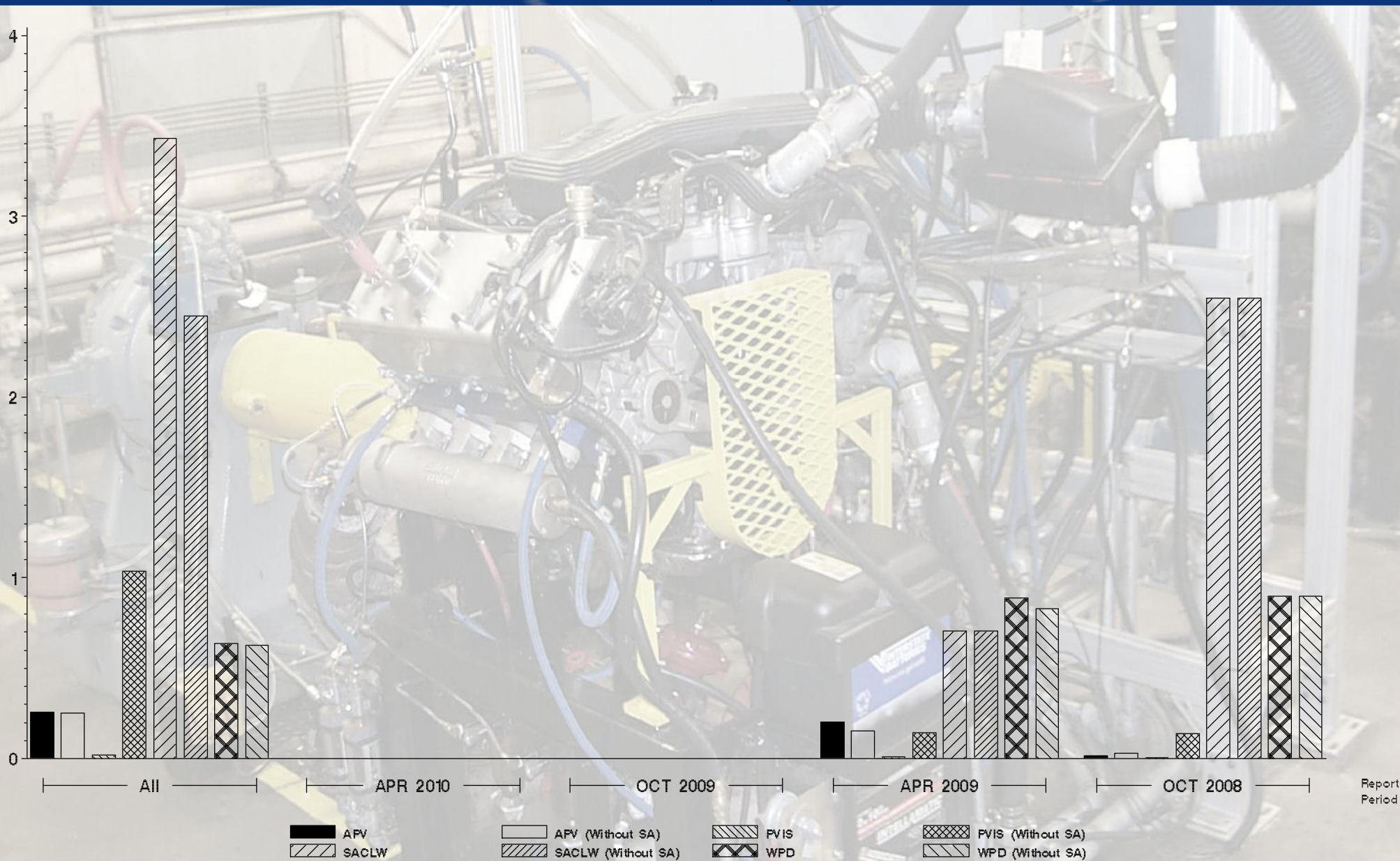
Monitoring Agency

6555 Penn Avenue, Pittsburgh, PA 15206

<https://acc-ma.org>

III F

Candidate Precision as Represented by Pooled S





Monitoring Agency

6555 Penn Avenue, Pittsburgh, PA 15206

<https://acc-ma.org>

IIIF

Candidate Precision as Represented by Pooled S

