

***IIIF - Report Period: APR 2009***  
***Status Of Reported Tests***

STATUS	COUNT	PERCENT
Aborted	6	7.595
Invalid	2	2.532
Valid	71	89.873
Total Reported Tests	79	100.000

**IIIF - Report Period: APR 2009**  
**Itemized Lost Test Report**

Obs	Date	TESTKEY	REASON
1	20081007	ACC-1113	Test Terminated At 67 Hours Due To Loss Of Oil Temperature Control Caused By Excessive Oil Viscosity Increase.
2	20081024	ACC-1180	Test Was Terminated At 78 Hours Due To Loss Of Oil Temp Control.
3	20081107	ACC-1267	Test Terminated At 64 Hours Due To Loss Of Oil Temperature Control.
4	20081202	ACC-1513	Test Was Terminated At 60 Hours Because The Oil Was Too Viscous To Continue.
5	20081217	ACC-1632	Test Declared Invalid Due To Faulty Repair To Tolflt Valve, Which Prevented Oil Temperature Control. Test Was Aborted At 70 Hours Due To Lack Of Temperature Control And Oil Thickening.
6	20090112	ACC-1686	Test Was Terminated At 68 Hours; Due To The Excessive Viscosity Increase We Could No Longer Safely Run The Test.
7	20090212	ACC-1879	Test Invalid Coolant Thermocouple Reversal.
8	20090223	ACC-1928	This Test Was Terminated At 60 Hours Due To Excessive Downtime Caused By Eletrical And Condenser Temperature Control Problems.

***IIIF - Report Period: APR 2009***  
***Replicate Database Report***

<b>Components of Replicate Database</b>	<b>APR 2009</b>	<b>All Periods</b>
Number of Tests	4	102
Formulations	2	43
Labs	2	4
Stands	3	19

**IIIF - Report Period: APR 2009**  
**by-Formulation Pooled s and Reproducibility of Replicate Data**

Report Period	Parameter	Degrees of Freedom	Pooled s	R
APR 2009	PVIS	2	0.00983	0.02754
APR 2009	WPD	2	0.88760	2.48527
APR 2009	APV	2	0.20156	0.56436
APR 2009	SACLW	2	0.70711	1.97990
APR 2009	PVIS (Without SA)	2	0.14272	0.39961
APR 2009	WPD (Without SA)	2	0.82778	2.31779
APR 2009	APV (Without SA)	2	0.15435	0.43219
APR 2009	SACLW (Without SA)	2	0.70711	1.97990
All	PVIS	59	0.02151	0.06023
All	WPD	59	0.63848	1.78775
All	APV	59	0.25635	0.71777
All	SACLW	59	3.43260	9.61128
All	PVIS (Without SA)	59	1.03640	2.90193
All	WPD (Without SA)	59	0.62622	1.75342
All	APV (Without SA)	59	0.25109	0.70304
All	SACLW (Without SA)	59	2.44846	6.85568

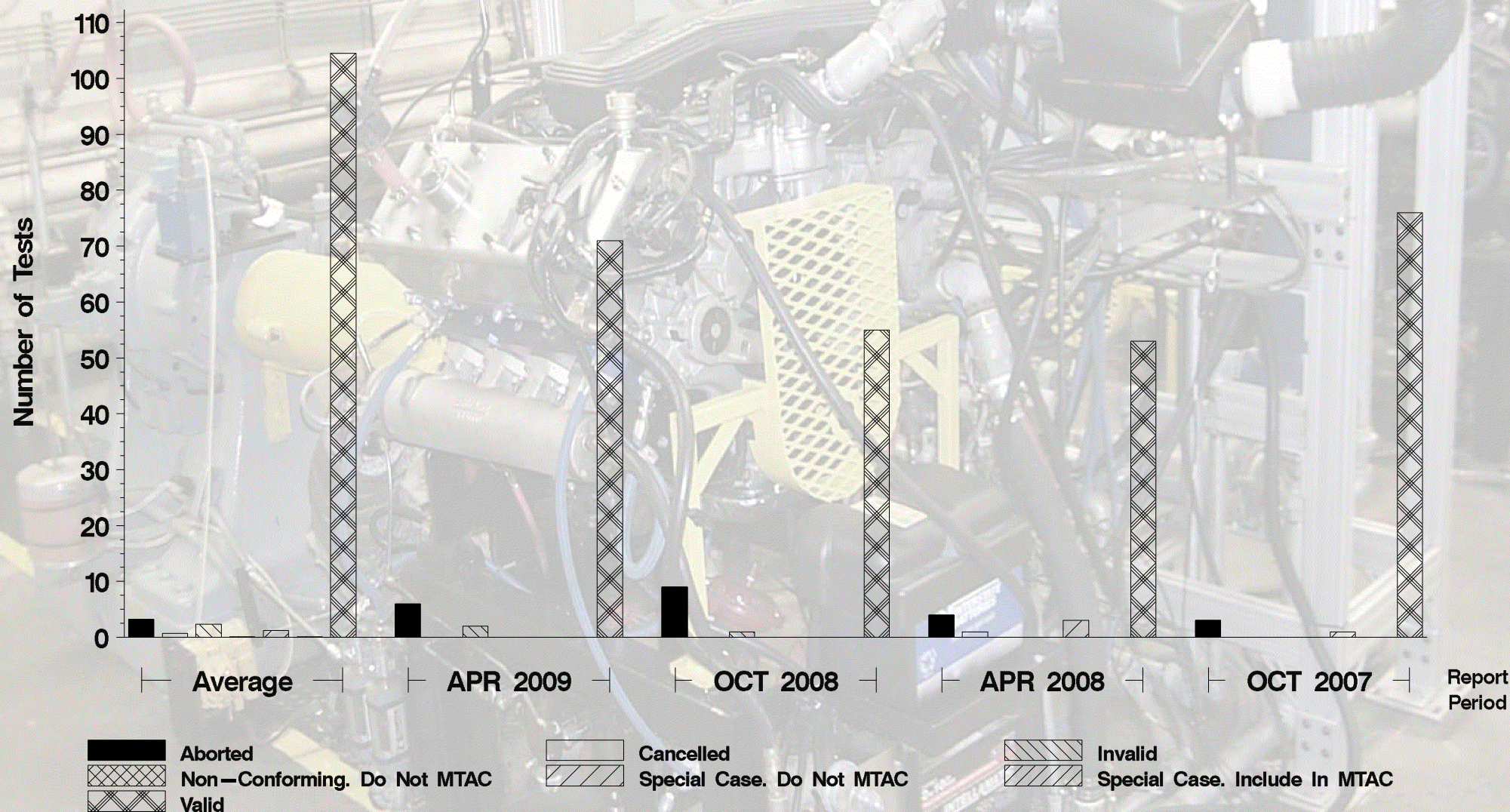


**IIIF - Report Period: APR 2009**  
**Pass/Fail**

Report Period	API Category	N	Number Passed	% Passed
APR 2009	All Categories, All Parameters	71	39	54.9296
APR 2009	SL - All Parameters	71	39	54.9296
APR 2009	SL, APV	71	67	94.3662
APR 2009	SL, APV (Without SA)	71	69	97.1831
APR 2009	SL, PVIS	71	50	70.4225
APR 2009	SL, PVIS (Without SA)	71	47	66.1972
APR 2009	SL, SACLW	71	68	95.7746
APR 2009	SL, SACLW (Without SA)	71	68	95.7746
APR 2009	SL, STUCK_RINGS	71	68	95.7746
APR 2009	SL, WPD	71	54	76.0563
APR 2009	SL, WPD (Without SA)	71	50	70.4225
All	All Categories, All Parameters	1881	950	50.5051
All	SL - All Parameters	1881	950	50.5051
All	SL, APV	1881	1578	83.8915
All	SL, APV (Without SA)	1881	1586	84.3169
All	SL, PVIS	1881	1354	71.9830
All	SL, PVIS (Without SA)	1881	1348	71.6640
All	SL, SACLW	1881	1789	95.1090
All	SL, SACLW (Without SA)	1881	1822	96.8634
All	SL, STUCK_RINGS	1881	1874	99.6279
All	SL, WPD	1881	1449	77.0335
All	SL, WPD (Without SA)	1881	1435	76.2892



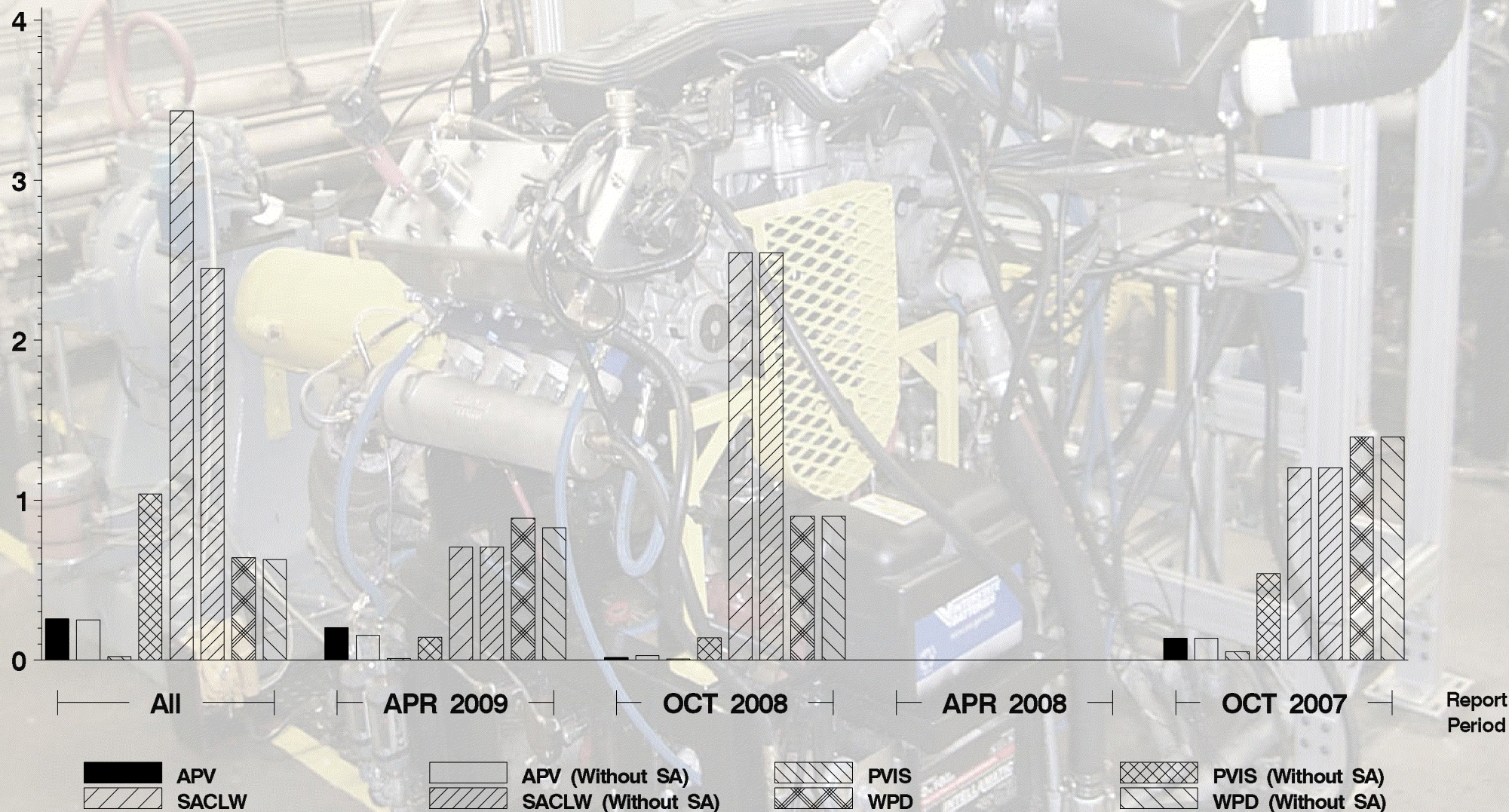
## IIIF Status of Reported Tests





## IIIF

Candidate Precision as Represented by Pooled S





## IIIF

Candidate Precision as Represented by Pooled S

