

ISM - Report Period: APR 2016
Status Of Reported Tests

STATUS	COUNT	PERCENT
Aborted	3	13.043
Valid	20	86.957
Total Reported Tests	23	100.000

ISM - Report Period: APR 2016
Itemized Lost Test Report

Obs	Date	TESTKEY	REASON
1	20151005	ACC-16993	Test Terminated During Break-In Due To Engine Scuffing Cylinder Number 2.
2	20151030	ACC-17182	Test Was Terminated At Break-In Due To A Spun Rod Bearing.
3	20160225	ACC-17933	Test Terminated At Test Hour 187. Engine Did Not Have Enough Oil To Complete Test Due To High Oil Consumption.

ISM - Report Period: APR 2016
Replicate Database Report

Components of Replicate Database	APR 2016	All Periods
Number of Tests	2	25
Formulations	1	12
Labs	1	4
Stands	2	8

ISM - Report Period: APR 2016
by-Formulation Pooled s and Reproducibility of Replicate Data

Report Period	Parameter	Degrees of Freedom	Pooled s	R
APR 2016	ISMMER	1	595.242	1666.68
APR 2016	ARWLTFNL	1	4.525	12.67
All	ISMMER	13	912.183	2554.11
All	ARWLTFNL	13	12.390	34.69

ISM - Report Period: APR 2016
Pass/Fail

Report Period	API Category	N	Number Passed	% Passed
APR 2016	All Categories, All Parameters	20	18	90.000
APR 2016	CJ-4 - All Parameters	20	18	90.000
APR 2016	CJ-4, ARWLTFNL	20	20	100.000
APR 2016	CJ-4, ISMMER	20	18	90.000
All	All Categories, All Parameters	557	220	39.497
All	CJ-4 - All Parameters	557	220	39.497
All	CJ-4, ARWLTFNL	557	541	97.127
All	CJ-4, ISMMER	557	220	39.497

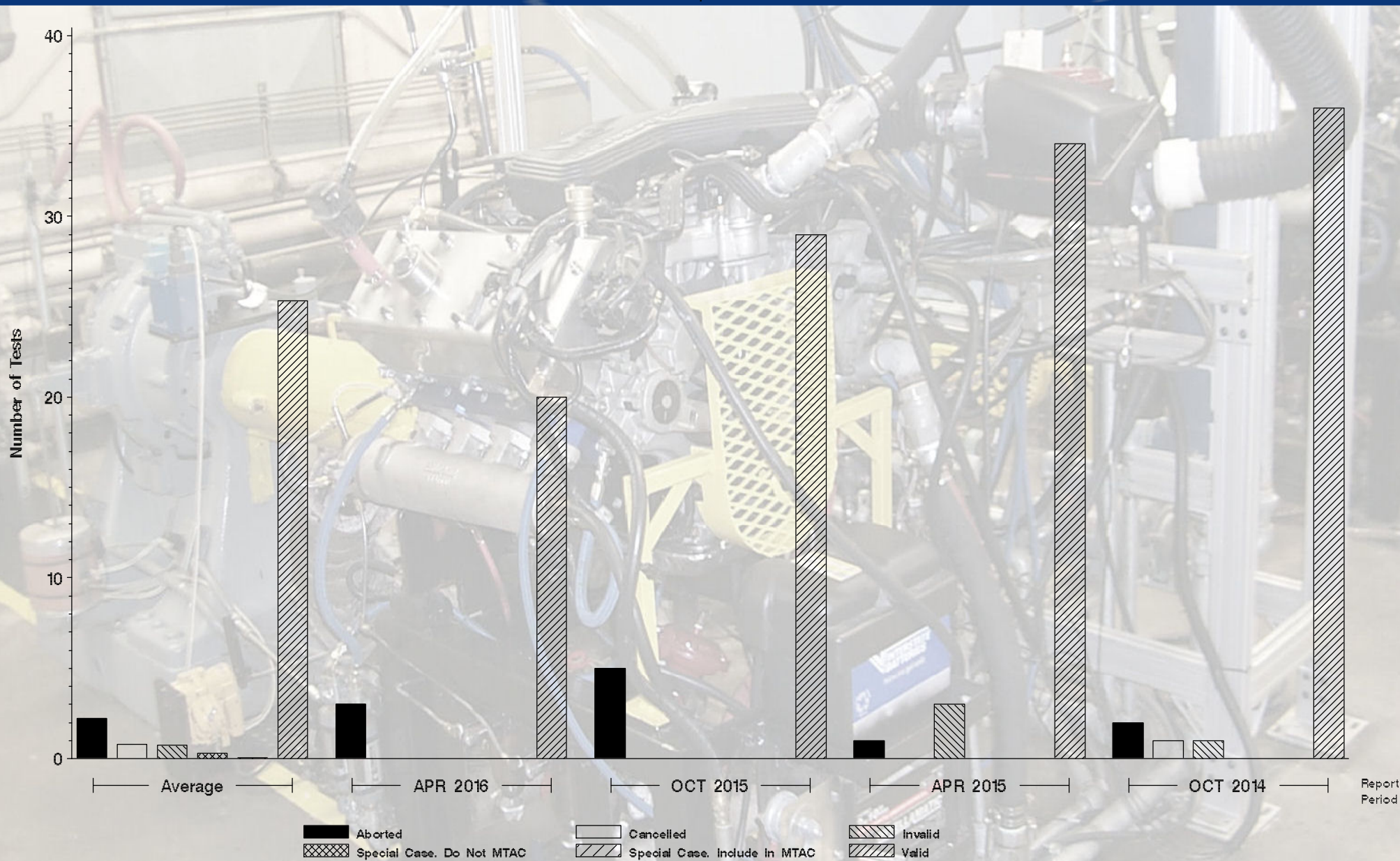


Monitoring Agency

6555 Penn Avenue, Pittsburgh, PA 15206

<https://acc-ma.org>

ISM
Status of Reported Tests





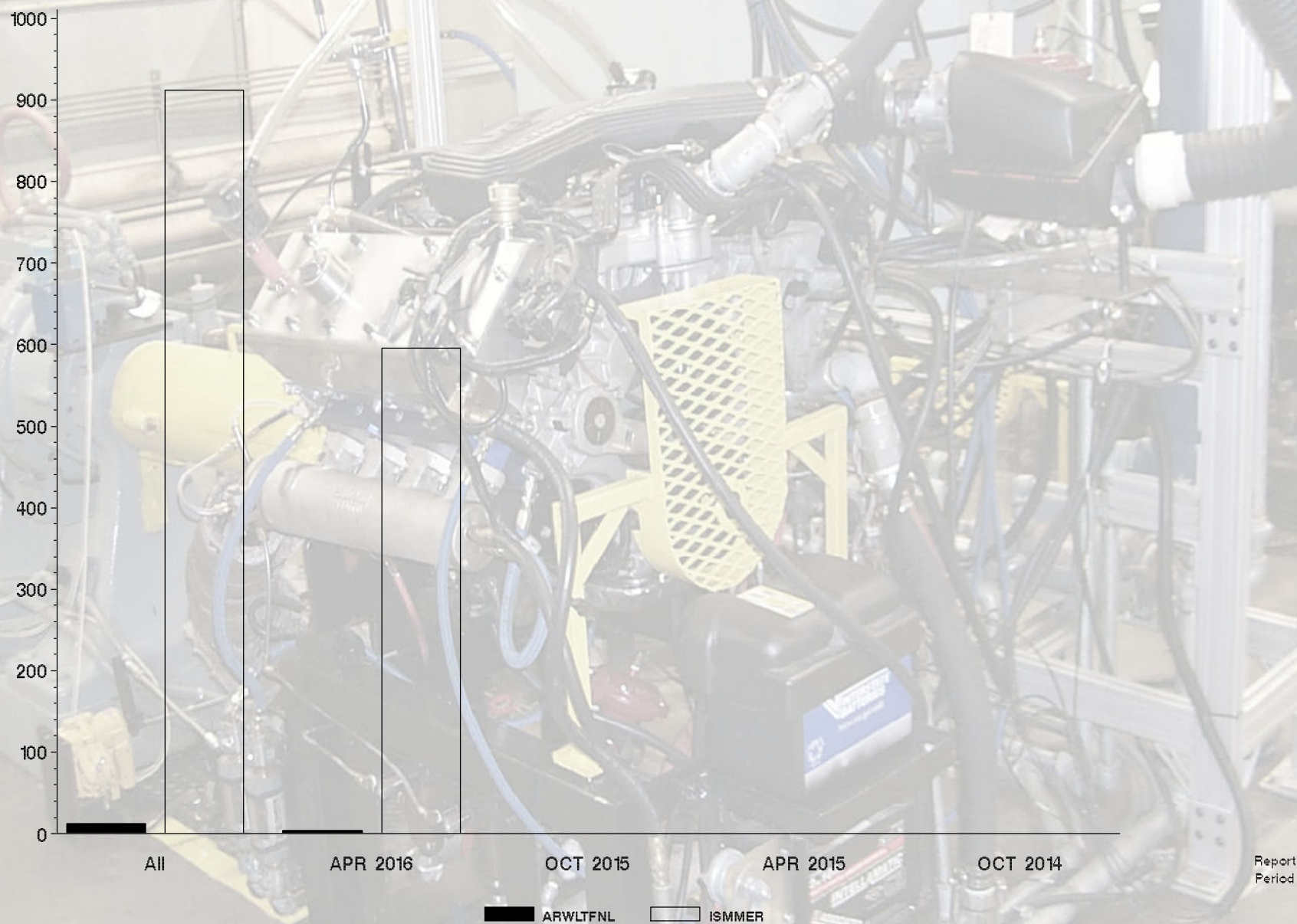
Monitoring Agency

6555 Penn Avenue, Pittsburgh, PA 15206

<https://acc-ma.org>

ISM

Candidate Precision as Represented by Pooled S





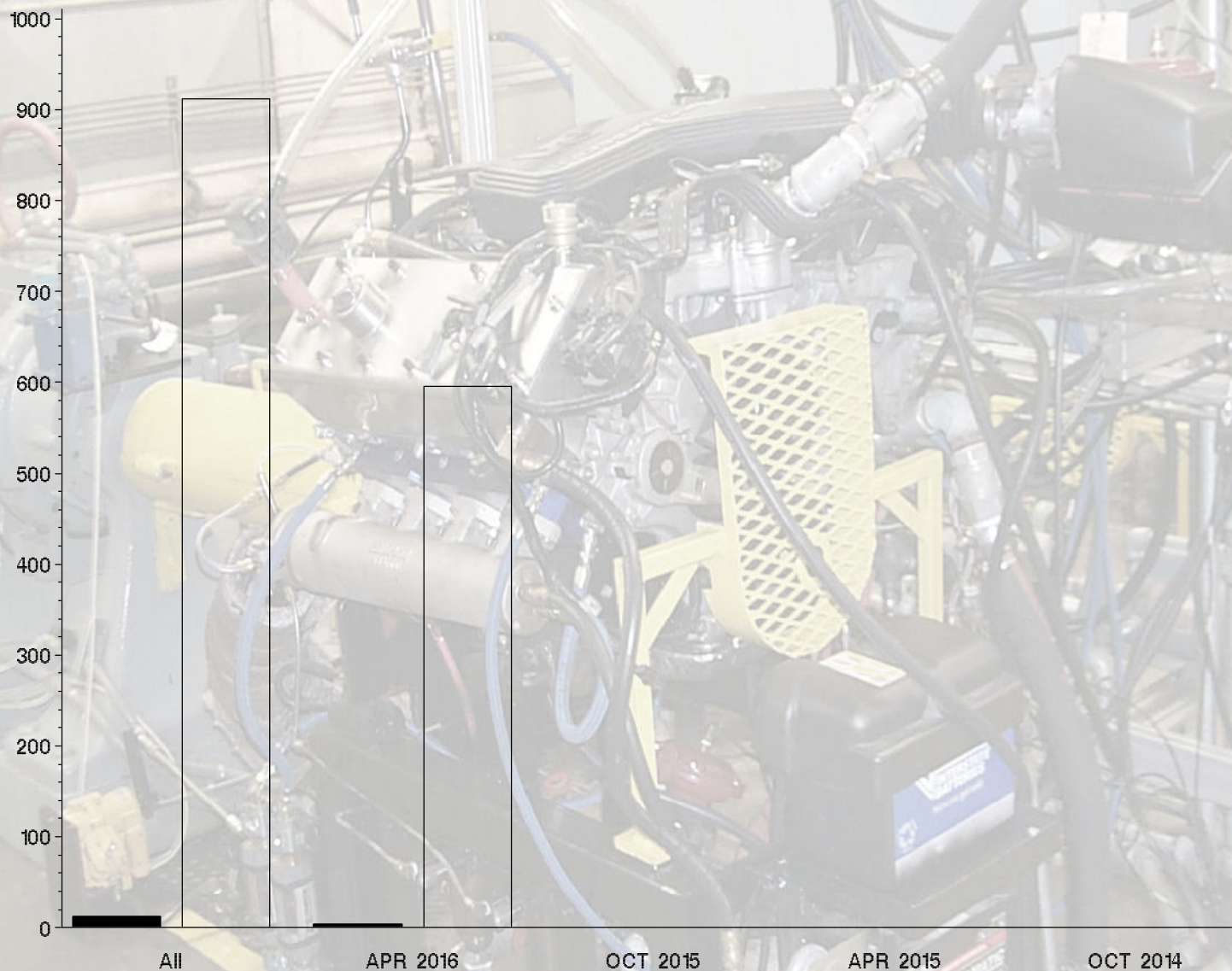
Monitoring Agency

6555 Penn Avenue, Pittsburgh, PA 15206

<https://acc-ma.org>

ISM

Candidate Precision as Represented by Pooled S



ARWLTFNL

ISMMER

Report
Period