

***ISM - Report Period: APR 2014***  
***Status Of Reported Tests***

STATUS	COUNT	PERCENT
Aborted	4	10.811
Cancelled	1	2.703
Special Case. Do Not MTAC	1	2.703
Valid	31	83.784
Total Reported Tests	37	100.000

***ISM - Report Period: APR 2014***  
***Itemized Lost Test Report***

Obs	Date	TESTKEY	REASON
1	20131007	ACC-12921	Test Terminated At Test Hour 197 At Sponsor Request.
2	20131227	ACC-13446	Lab Declared Test Invalid Due To Extremely Low Oil Pressure Causing Inaccurate Filter Plugging Data
3	20140117	ACC-13547	Test Terminated During Break-In Due To A Rod Wrist Pin Bushing Failure.
4	20140214	ACC-13692	Test Terminated At Test Hour 170 Due To Coolant In The Oil Volume.
5	20140310	ACC-13792	Test Declared Non-Interpretable Due To The Total Oil Consumption Being Greater Than 15kg.
6	20140331	ACC-13908	Test Terminated At Test Hour 143 Due To Procedural Error - Missed Timing Adjustment.

***ISM - Report Period: APR 2014***  
***Replicate Database Report***

Components of Replicate Database	APR 2014	All Periods
Number of Tests	.	21
Formulations	.	10
Labs	.	4
Stands	.	6

***ISM - Report Period: APR 2014***  
***by-Formulation Pooled s and Reproducibility of Replicate Data***

Report Period	Parameter	Degrees of Freedom	Pooled s	R
All	ISMMER	11	928.536	2599.90
All	ARWLTFNL	11	12.504	35.01

**ISM - Report Period: APR 2014**  
**Pass/Fail**

Report Period	API Category	N	Number Passed	% Passed
APR 2014	All Categories, All Parameters	31	19	61.290
APR 2014	CJ-4 - All Parameters	31	19	61.290
APR 2014	CJ-4, ARWLTFNL	31	31	100.000
APR 2014	CJ-4, ISMMER	31	19	61.290
All	All Categories, All Parameters	438	148	33.790
All	CJ-4 - All Parameters	438	148	33.790
All	CJ-4, ARWLTFNL	438	426	97.260
All	CJ-4, ISMMER	438	148	33.790

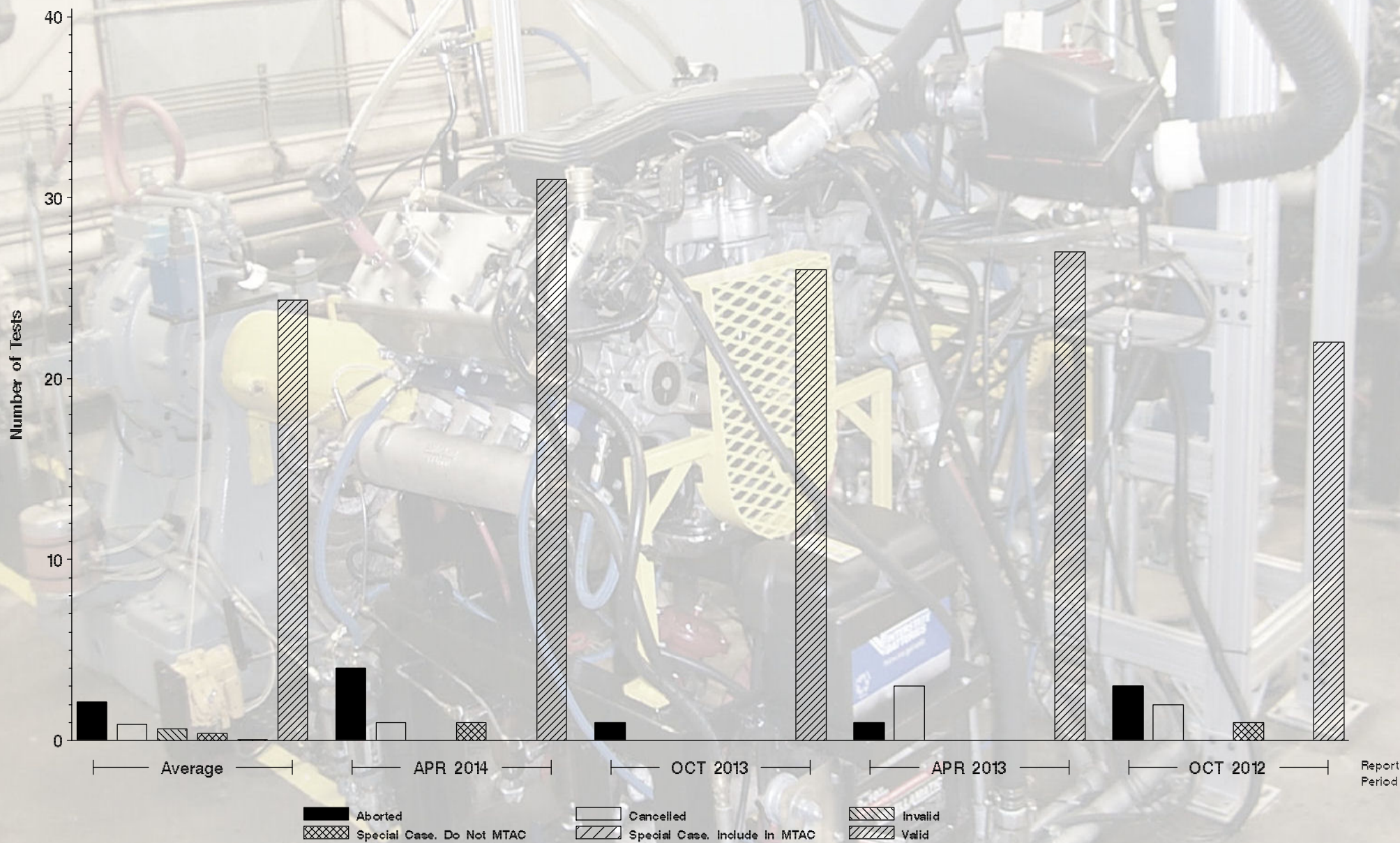


# Monitoring Agency

6555 Penn Avenue, Pittsburgh, PA 15206

<https://acc-ma.org>

ISM  
Status of Reported Tests







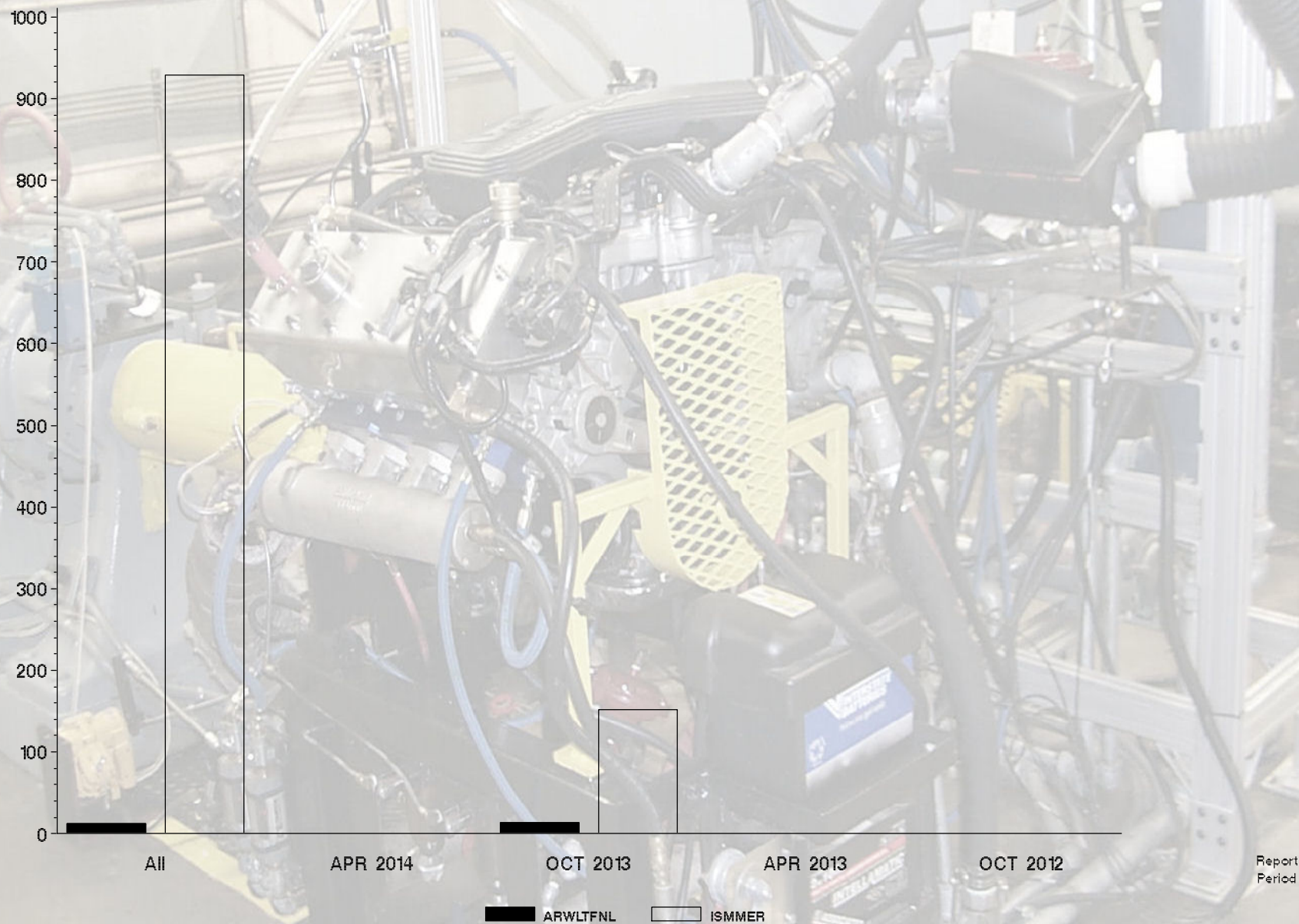
# Monitoring Agency

6555 Penn Avenue, Pittsburgh, PA 15206

<https://acc-ma.org>

ISM

Candidate Precision as Represented by Pooled S





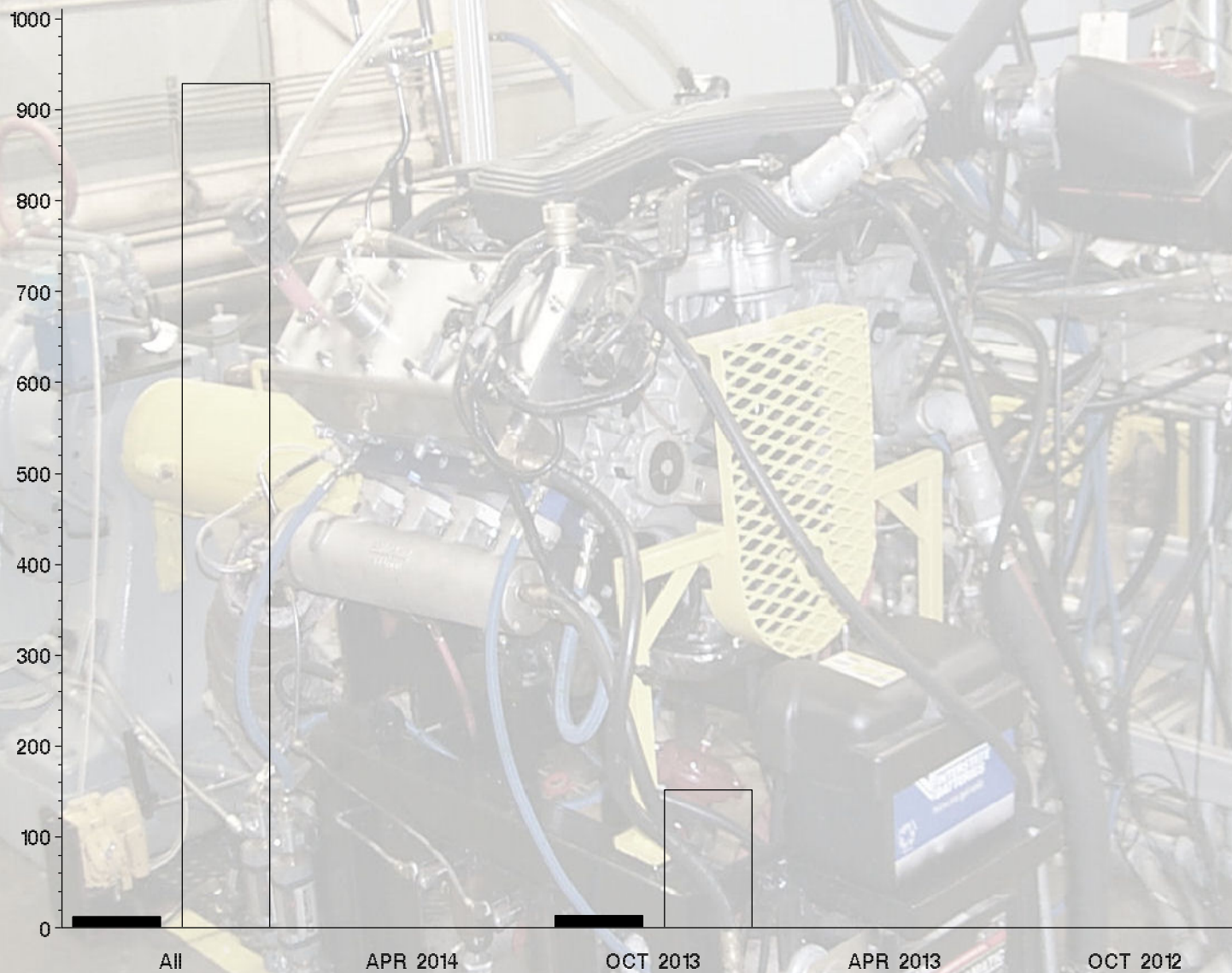
# Monitoring Agency

6555 Penn Avenue, Pittsburgh, PA 15206

<https://acc-ma.org>

ISM

Candidate Precision as Represented by Pooled S



Report  
Period