

***1N - Report Period: OCT 2015***  
***Status Of Reported Tests***

STATUS	COUNT	PERCENT
Aborted	7	12.963
Cancelled	3	5.556
Invalid	3	5.556
Valid	41	75.926
Total Reported Tests	54	100.000

***1N - Report Period: OCT 2015  
Itemized Lost Test Report***

Obs	Date	TESTKEY	REASON
1	20150402	ACC-15751	Test Terminated At Test Hour 213 Due To High Oil Consumption.
2	20150512	ACC-15945	Test Terminated At Test Hour 242 Due To Scuffed Piston
3	20150512	ACC-16024	Test Terminated At Test Hour 106 At Sponsor Request
4	20150520	ACC-16074	Test Terminated At Break-In Due To Discovering Oil Misblend.
5	20150619	ACC-16300	Test Declared Invalid. At Eot It Was Discovered That A Binding In The Geartrain Caused Excessive Copper Level That Influenced Test Results.
6	20150702	ACC-16275	Test Declared Invalid Due To The Connecting Rod Found To Be Damaged After Eot.
7	20150707	ACC-16406	Test Terminated At Break-In Due To Spun Rod Bearing.
8	20150715	ACC-16458	Test Terminated At Test Hour 147 At Sponsor Request.
9	20150722	ACC-16516	Test Declared Invalid Due To A Hardware Problem Discovered At The End Of Test. The Connecting Rod Was Out Of Specification.
10	20150824	ACC-16569	Test Terminated At Test Hour 83 Due To High Oil Loss.
11	20150902	ACC-16762	Test Terminated At Test Hour 151 Due To Piston Scuffing.
12	20150904	ACC-16729	Test Terminated At Test Hour 100 At Sponsor Request.
13	20150915	ACC-16851	Test Terminated At Break-In Due To A Spun Rod Bearing.

***1N - Report Period: OCT 2015***  
***Replicate Database Report***

Components of Replicate Database	OCT 2015	All Periods
Number of Tests	2	155
Formulations	1	69
Labs	2	8
Stands	2	44

***1N - Report Period: OCT 2015***  
***by-Formulation Pooled s and Reproducibility of Replicate Data***

Report Period	Parameter	Degrees of Freedom	Pooled s	R
OCT 2015	TGF	1	5.6569	15.839
OCT 2015	WD	1	15.6978	43.954
OCT 2015	TLHC	1	0.0000	0.000
OCT 2015	BSOC	1	0.0141	0.040
OCT 2015	ETOC	1	0.0141	0.040
OCT 2015	TGF (Without SA)	1	3.5355	9.899
OCT 2015	WD (Without SA)	1	0.4243	1.188
OCT 2015	TLHC (Without SA)	1	0.0000	0.000
OCT 2015	BSOC (Without SA)	1	0.0141	0.040
OCT 2015	ETOC (Without SA)	1	0.0141	0.040
All	TGF	86	12.2145	34.201
All	WD	86	41.9826	117.551
All	TLHC	86	0.9128	2.556
All	BSOC	86	0.0686	0.192
All	ETOC	86	0.0702	0.197
All	TGF (Without SA)	86	8.2992	23.238
All	WD (Without SA)	86	29.8614	83.612
All	TLHC (Without SA)	86	0.4315	1.208
All	BSOC (Without SA)	86	0.0335	0.094
All	ETOC (Without SA)	86	0.0839	0.235

**1N - Report Period: OCT 2015**  
**Pass/Fail**

Report Period	API Category	N	Number Passed	% Passed
OCT 2015	All Categories, All Parameters	41	19	46.341
OCT 2015	CJ-4 - All Parameters	41	19	46.341
OCT 2015	CJ-4, BSOC	41	40	97.561
OCT 2015	CJ-4, BSOC (Without SA)	41	40	97.561
OCT 2015	CJ-4, ETOC	41	38	92.683
OCT 2015	CJ-4, ETOC (Without SA)	41	38	92.683
OCT 2015	CJ-4, SCUFFING	41	41	100.000
OCT 2015	CJ-4, STUCK_RINGS	41	41	100.000
OCT 2015	CJ-4, TGF	41	24	58.537
OCT 2015	CJ-4, TGF (Without SA)	41	26	63.415
OCT 2015	CJ-4, TLHC	41	38	92.683
OCT 2015	CJ-4, TLHC (Without SA)	41	38	92.683
OCT 2015	CJ-4, WD	41	30	73.171
OCT 2015	CJ-4, WD (Without SA)	41	32	78.049
All	All Categories, All Parameters	1145	314	27.424
All	CJ-4 - All Parameters	1145	314	27.424
All	CJ-4, BSOC	1145	1132	98.865
All	CJ-4, BSOC (Without SA)	1145	1139	99.476
All	CJ-4, ETOC	1145	1115	97.380
All	CJ-4, ETOC (Without SA)	1145	1069	93.362
All	CJ-4, SCUFFING	1145	673	58.777
All	CJ-4, STUCK_RINGS	1145	678	59.214
All	CJ-4, TGF	1145	764	66.725
All	CJ-4, TGF (Without SA)	1145	1000	87.336
All	CJ-4, TLHC	1145	922	80.524

***1N - Report Period: OCT 2015***  
***Pass/Fail***

Report Period	API Category	N	Number Passed	% Passed
All	CJ-4, TLHC (Without SA)	1145	1045	91.266
All	CJ-4, WD	1145	817	71.354
All	CJ-4, WD (Without SA)	1145	925	80.786

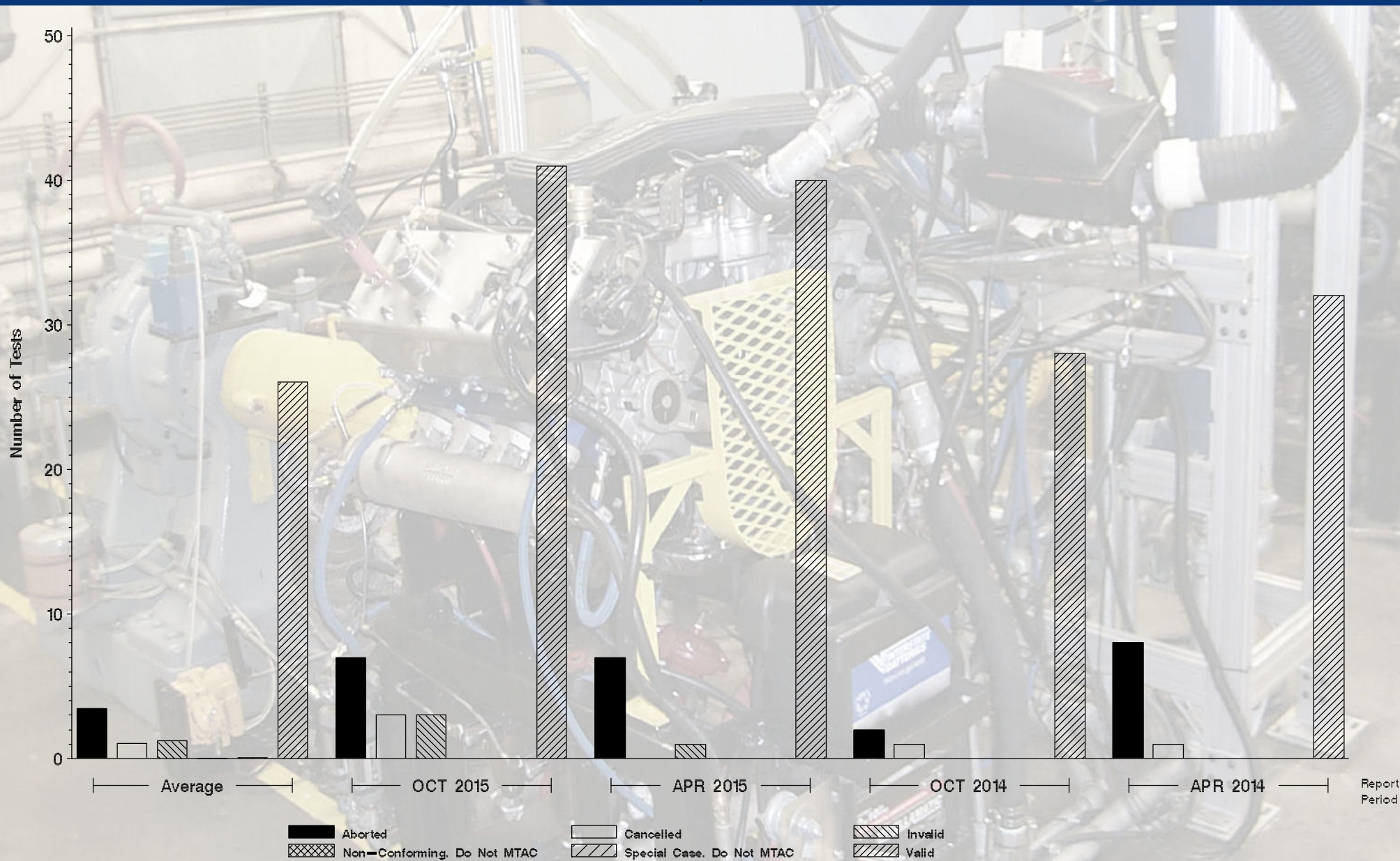


# Monitoring Agency

6555 Penn Avenue, Pittsburgh, PA 15206

<https://acc-ma.org>

1N  
Status of Reported Tests





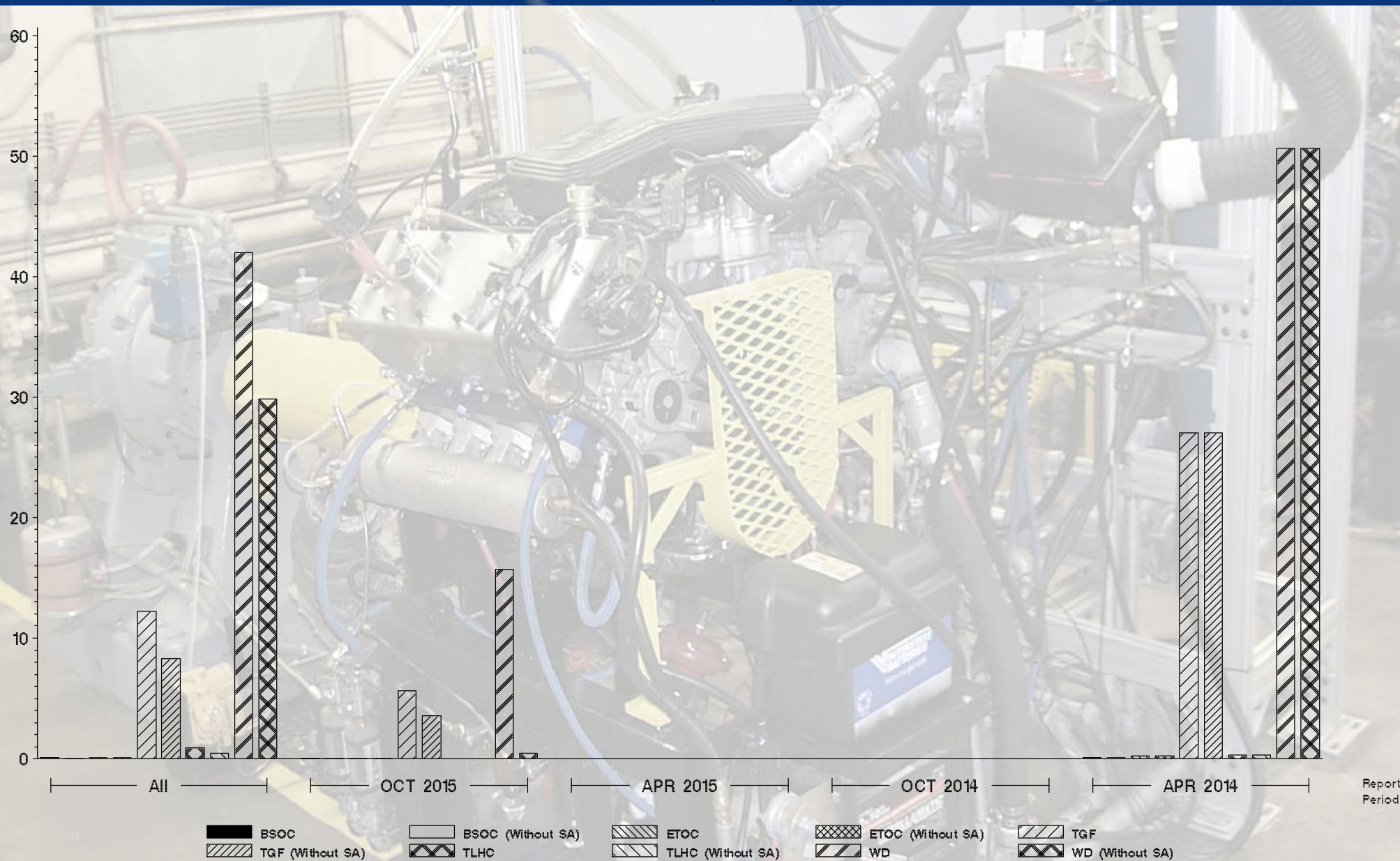
# Monitoring Agency

6555 Penn Avenue, Pittsburgh, PA 15206

<https://acc-ma.org>

1N

Candidate Precision as Represented by Pooled S





# Monitoring Agency

6555 Penn Avenue, Pittsburgh, PA 15206

<https://acc-ma.org>

1N

Candidate Precision as Represented by Pooled S

