

1N - Report Period: APR 2015
Status Of Reported Tests

1

STATUS	COUNT	PERCENT
Aborted	7	14.583
Invalid	1	2.083
Valid	40	83.333
Total Reported Tests	48	100.000

1N - Report Period: APR 2015
Itemized Lost Test Report

Obs	Date	TESTKEY	REASON
1	20141014	ACC-14810	Test Terminated Due To Hardware Failure.
2	20141117	ACC-15055	Test Terminated At Test Hour 122 Due To A Large Loss Of Oil Caused By A Leak.
3	20141119	ACC-14968	Test Terminated At Test Hour 7 Due To Excessive Downtime.
4	20141121	ACC-15105	Test Terminated At Test Hour 139 Due To Coolant In Oil.
5	20141202	ACC-15168	Test Terminated At Test Hour 158 Due To Camshaft Failure.
6	20150217	ACC-15533	Test Terminated During Break-In Due To Discovering An Oil Misblend.
7	20150302	ACC-15247	Test Terminated At Start Up Due To Piston Scuffing.
8	20150318	ACC-15671	Lab Declared Test Invalid Due To Excessive Wear Of Connecting Rod Pin Bore Bushing. Copper Levels Spiked During Test.

1N - Report Period: APR 2015
Replicate Database Report

Components of Replicate Database	APR 2015	All Periods
Number of Tests	.	153
Formulations	.	68
Labs	.	8
Stands	.	43

1N - Report Period: APR 2015
by-Formulation Pooled s and Reproducibility of Replicate Data

Report Period	Parameter	Degrees of Freedom	Pooled s	R
All	TGF	85	12.2708	34.358
All	WD	85	42.1945	118.145
All	TLHC	85	0.9181	2.571
All	BSOC	85	0.0690	0.193
All	ETOC	85	0.0706	0.198
All	TGF (Without SA)	85	8.3390	23.349
All	WD (Without SA)	85	30.0365	84.102
All	TLHC (Without SA)	85	0.4341	1.215
All	BSOC (Without SA)	85	0.0336	0.094
All	ETOC (Without SA)	85	0.0844	0.236

1N - Report Period: APR 2015
Pass/Fail

Report Period	API Category	N	Number Passed	% Passed
APR 2015	All Categories, All Parameters	40	25	62.500
APR 2015	CJ-4 - All Parameters	40	25	62.500
APR 2015	CJ-4, BSOC	40	39	97.500
APR 2015	CJ-4, BSOC (Without SA)	40	39	97.500
APR 2015	CJ-4, ETOC	40	39	97.500
APR 2015	CJ-4, ETOC (Without SA)	40	39	97.500
APR 2015	CJ-4, SCUFFING	40	40	100.000
APR 2015	CJ-4, STUCK_RINGS	40	40	100.000
APR 2015	CJ-4, TGF	40	33	82.500
APR 2015	CJ-4, TGF (Without SA)	40	35	87.500
APR 2015	CJ-4, TLHC	40	36	90.000
APR 2015	CJ-4, TLHC (Without SA)	40	36	90.000
APR 2015	CJ-4, WD	40	33	82.500
APR 2015	CJ-4, WD (Without SA)	40	33	82.500
All	All Categories, All Parameters	1104	295	26.721
All	CJ-4 - All Parameters	1104	295	26.721
All	CJ-4, BSOC	1104	1092	98.913
All	CJ-4, BSOC (Without SA)	1104	1099	99.547
All	CJ-4, ETOC	1104	1077	97.554
All	CJ-4, ETOC (Without SA)	1104	1031	93.388
All	CJ-4, SCUFFING	1104	632	57.246
All	CJ-4, STUCK_RINGS	1104	637	57.699
All	CJ-4, TGF	1104	740	67.029
All	CJ-4, TGF (Without SA)	1104	974	88.225
All	CJ-4, TLHC	1104	884	80.072

1N - Report Period: APR 2015
Pass/Fail

Report Period	API Category	N	Number Passed	% Passed
All	CJ-4, TLHC (Without SA)	1104	1007	91.214
All	CJ-4, WD	1104	787	71.286
All	CJ-4, WD (Without SA)	1104	893	80.888

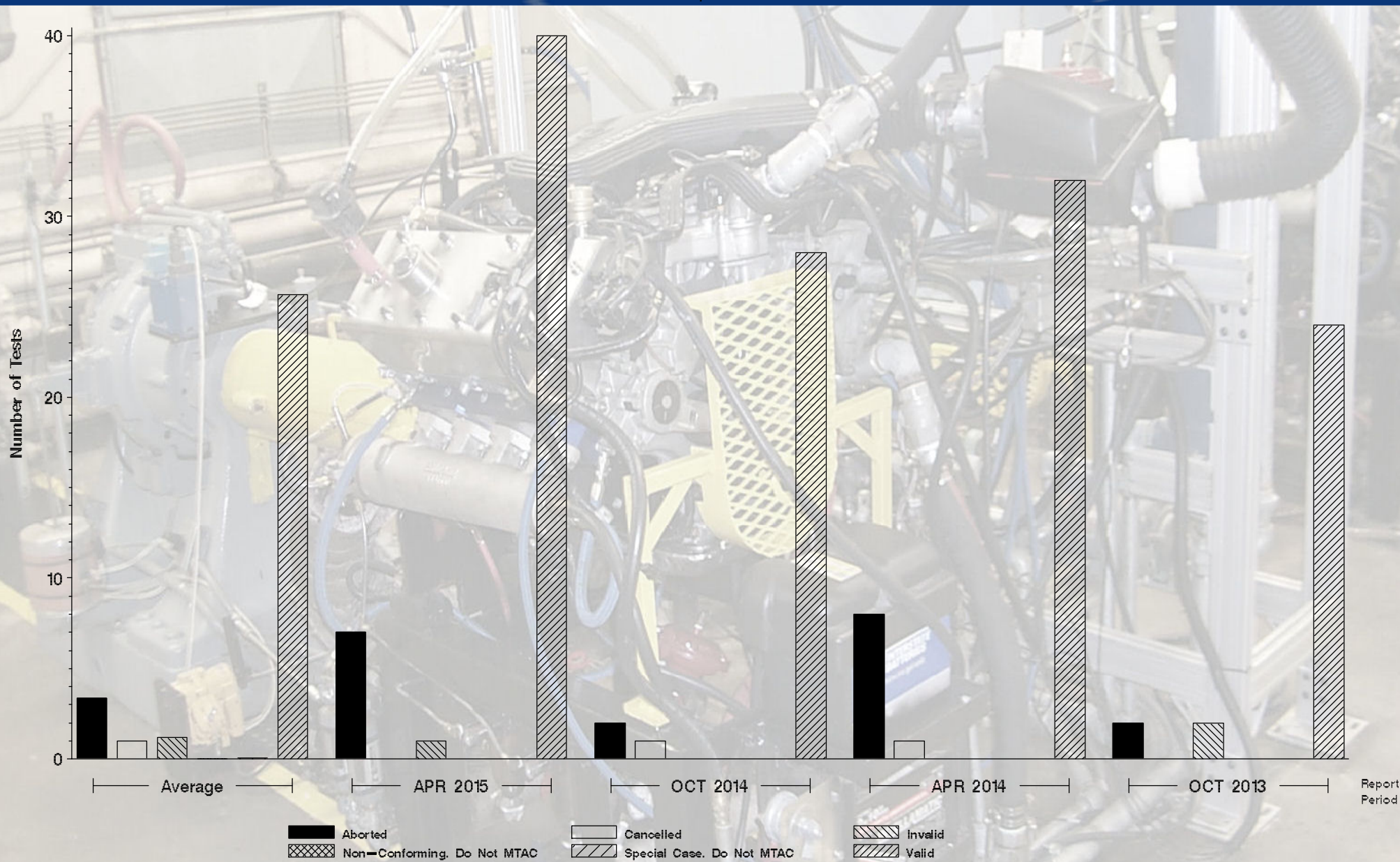


Monitoring Agency

6555 Penn Avenue, Pittsburgh, PA 15206

<https://acc-ma.org>

1N
Status of Reported Tests





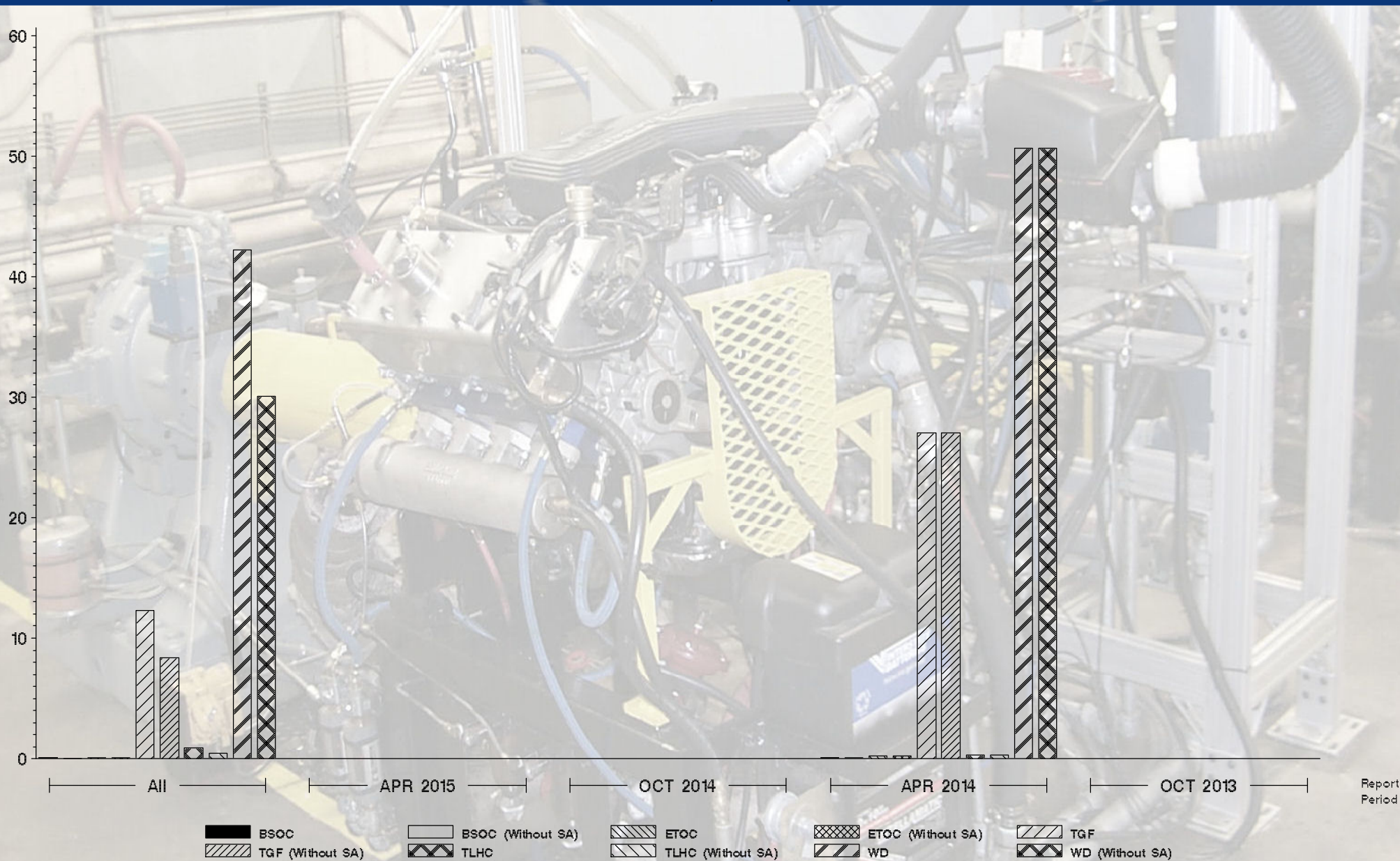
Monitoring Agency

6555 Penn Avenue, Pittsburgh, PA 15206

<https://acc-ma.org>

1N

Candidate Precision as Represented by Pooled S





Monitoring Agency

6555 Penn Avenue, Pittsburgh, PA 15206

<https://acc-ma.org>

1N

Candidate Precision as Represented by Pooled S

