

1N - Report Period: APR 2014
Status Of Reported Tests

1

STATUS	COUNT	PERCENT
Aborted	8	19.512
Cancelled	1	2.439
Valid	32	78.049
Total Reported Tests	41	100.000

1N - Report Period: APR 2014
Itemized Lost Test Report

Obs	Date	TESTKEY	REASON
1	20131007	ACC-12896	Test Terminated At Test Hour 15 Due To Humidity Limit Deviation.
2	20131118	ACC-13189	Test Terminated At Test Hour 45 At Sponsor Request.
3	20131126	ACC-13248	Test Terminated At Test Hour 46 Due To High Oil Consumption Caused By A Scuffed Piston.
4	20131216	ACC-13368	Test Terminated At Test Hour 54 Due To Oil Pump Failure.
5	20140117	ACC-13409	Test Terminated At Test Hour 41 Due To The Fuel Dilution At The 24 Hour Period Was Greater Than 2%.
6	20140210	ACC-13642	Test Terminated At Test Hour 48 Due To Excessive Oil Consumption.
7	20140219	ACC-13703	Test Terminated At Test Hour 1 Due To Fuel Dilution Caused By Faulty Injector.
8	20140310	ACC-13813	Test Terminated At Warm Up Due To Spun Rod Bearing Causing Catastrophic Crank Damage.
9	20140310	ACC-13805	Test Terminated At Test Hour 165 Due To A Failed Oil Pump Gear That Contaminated The Test Oil.

1N - Report Period: APR 2014
Replicate Database Report

Components of Replicate Database	APR 2014	All Periods
Number of Tests	8	153
Formulations	5	68
Labs	2	8
Stands	3	43

1N - Report Period: APR 2014
by-Formulation Pooled s and Reproducibility of Replicate Data

Report Period	Parameter	Degrees of Freedom	Pooled s	R
APR 2014	TGF	3	27.0000	75.600
APR 2014	WD	3	50.6335	141.774
APR 2014	TLHC	3	0.2830	0.792
APR 2014	BSOC	3	0.0600	0.168
APR 2014	EOTOC	3	0.2496	0.699
APR 2014	TGF (Without SA)	3	27.0000	75.600
APR 2014	WD (Without SA)	3	50.6413	141.796
APR 2014	TLHC (Without SA)	3	0.1401	0.392
All	TGF	85	12.2708	34.358
All	WD	85	42.1945	118.145
All	TLHC	85	0.9181	2.571
All	BSOC	85	0.0690	0.193
All	EOTOC	85	0.0706	0.198
All	TGF (Without SA)	85	8.3390	23.349
All	WD (Without SA)	85	30.0365	84.102
All	TLHC (Without SA)	85	0.4490	1.257

1N - Report Period: APR 2014
Pass/Fail

Report Period	API Category	N	Number Passed	% Passed
APR 2014	All Categories, All Parameters	32	11	34.375
APR 2014	CJ-4 - All Parameters	32	11	34.375
APR 2014	CJ-4, BSOC	32	32	100.000
APR 2014	CJ-4, EOTOC	32	28	87.500
APR 2014	CJ-4, SCUFFING	32	31	96.875
APR 2014	CJ-4, STUCK_RINGS	32	32	100.000
APR 2014	CJ-4, TGF	32	25	78.125
APR 2014	CJ-4, TGF (Without SA)	32	30	93.750
APR 2014	CJ-4, TLHC	32	29	90.625
APR 2014	CJ-4, TLHC (Without SA)	32	29	90.625
APR 2014	CJ-4, WD	32	13	40.625
APR 2014	CJ-4, WD (Without SA)	32	13	40.625
All	All Categories, All Parameters	1036	258	24.903
All	CJ-4 - All Parameters	1036	258	24.903
All	CJ-4, BSOC	1036	1025	98.938
All	CJ-4, EOTOC	1036	1011	97.587
All	CJ-4, SCUFFING	1036	565	54.537
All	CJ-4, STUCK_RINGS	1036	569	54.923
All	CJ-4, TGF	1036	690	66.602
All	CJ-4, TGF (Without SA)	1036	913	88.127
All	CJ-4, TLHC	1036	823	79.440
All	CJ-4, TLHC (Without SA)	1036	944	91.120
All	CJ-4, WD	1036	736	71.042
All	CJ-4, WD (Without SA)	1036	840	81.081

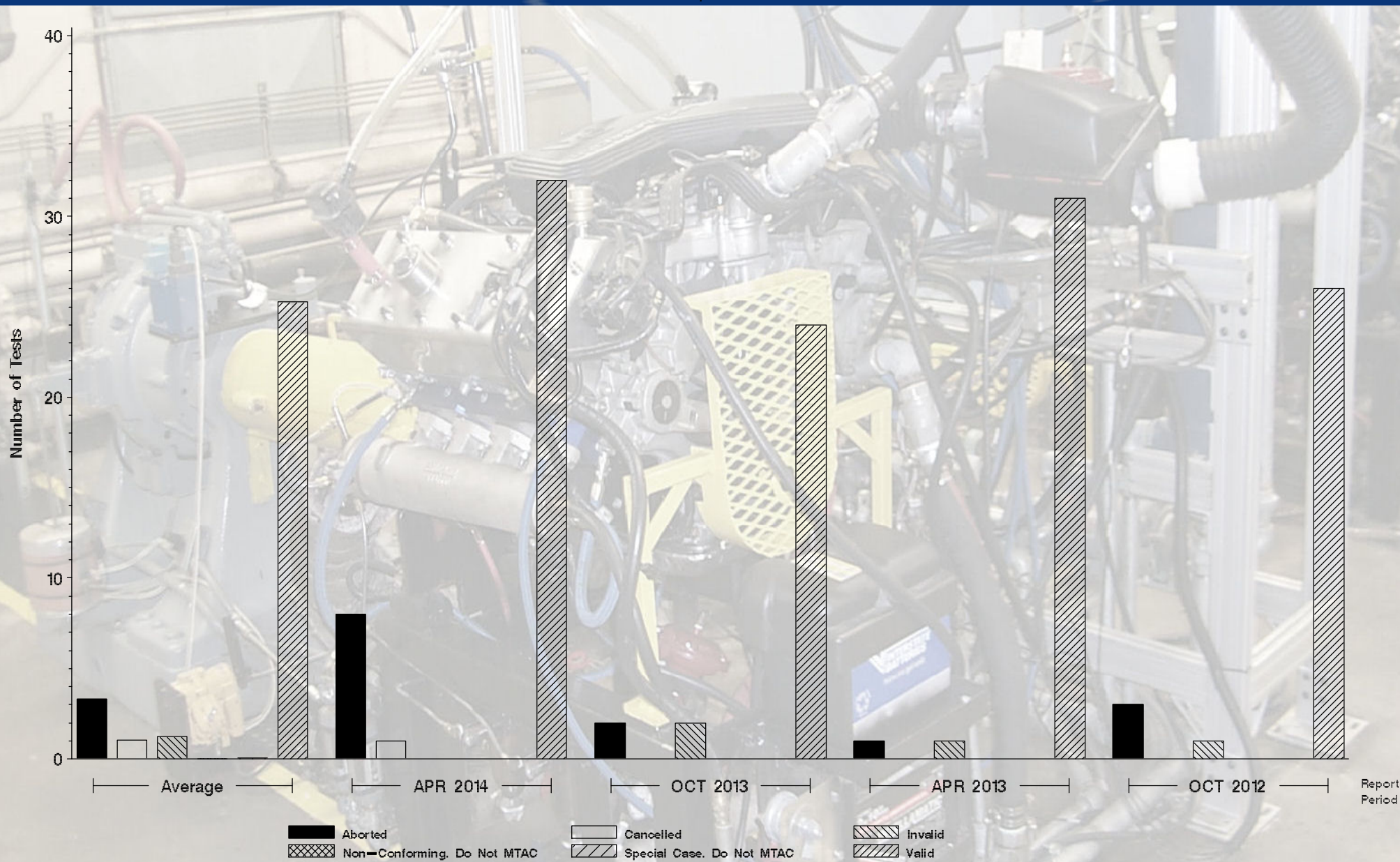


Monitoring Agency

6555 Penn Avenue, Pittsburgh, PA 15206

<https://acc-ma.org>

1N
Status of Reported Tests





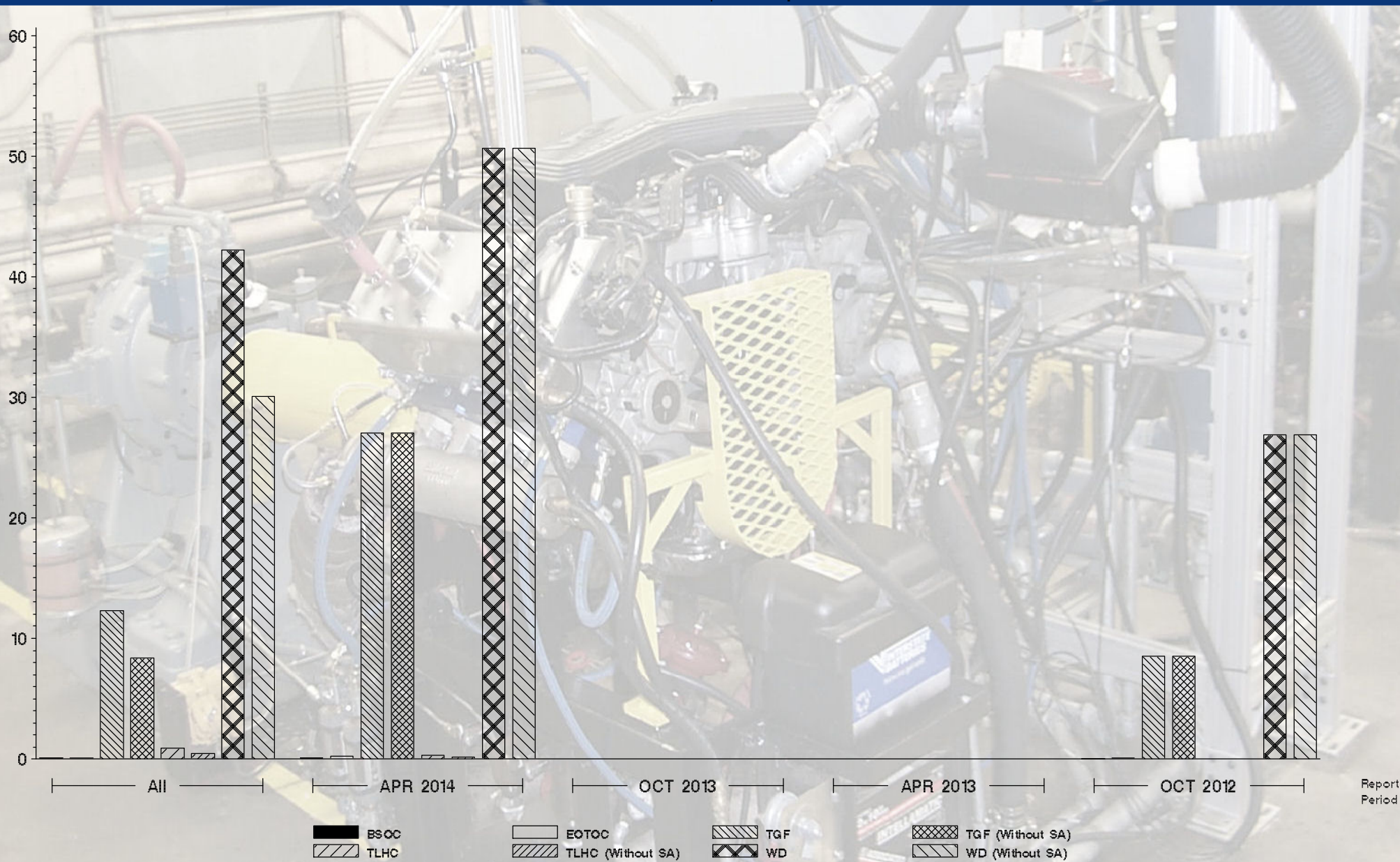
Monitoring Agency

6555 Penn Avenue, Pittsburgh, PA 15206

<https://acc-ma.org>

1N

Candidate Precision as Represented by Pooled S





Monitoring Agency

6555 Penn Avenue, Pittsburgh, PA 15206

<https://acc-ma.org>

1N

Candidate Precision as Represented by Pooled S

